

KLHL15 antibody

Catalog Number: 112094

Product name

KLHL15 antibody

Specificity

Human; other species not tested.

Antibody description

KLHL15 Rabbit Polyclonal antibody. Positive IHC detected in human brain tissue, human testis tissue. Positive WB detected in HeLa cells, HEK-293 cells. Observed molecular weight by Western-blot: 70 kDa

Preparation

This antibody was obtained by immunization of KLHL15 recombinant protein (Accession Number: NM_030624). Purification method: Antigen affinity purified.

Formulation

PBS with 0.1% sodium azide and 50% glycerol pH 7.3.

Storage

Store at -20°C. DO NOT ALIQUOT

Clonality

Polyclonal

Ig Type

Rabbit IgG

Applications

ELISA, IHC, WB

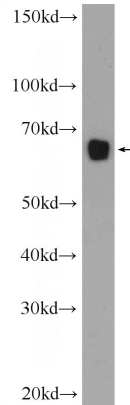
Dilutions

Recommended Dilution:

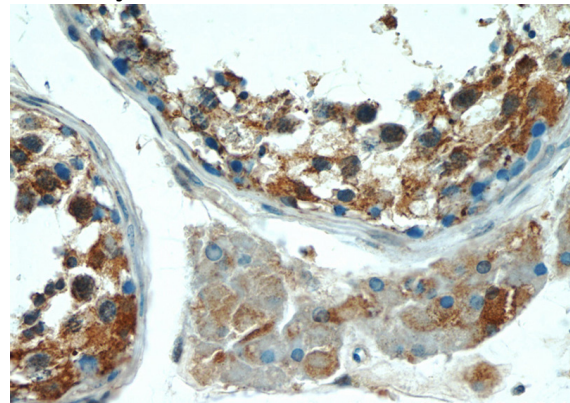
WB: 1:200-1:2000

IHC: 1:20-1:200

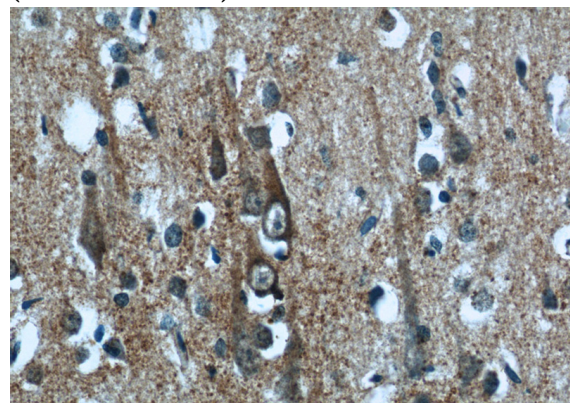
Validations



HeLa cells were subjected to SDS PAGE followed by western blot with Catalog No:112094(KLHL15 Antibody) at dilution of 1:600



Immunohistochemistry of paraffin-embedded human testis tissue slide using Catalog No:112094(KLHL15 Antibody) at dilution of 1:50 (under 40x lens)



Immunohistochemistry of paraffin-embedded human brain tissue slide using Catalog

KLHL15 antibody



Catalog Number: 112094

No:112094(KLHL15 Antibody) at dilution of 1:50 (under 40x lens)