

# KLHL14-Specific antibody



Catalog Number: 112093

## Product name

KLHL14-Specific antibody

Recommended Dilution:

WB: 1:500-1:5000

## Specificity

Human, Mouse, Rat; other species not tested.

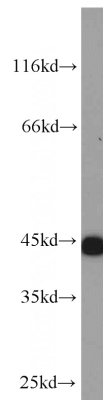
IHC: 1:20-1:200

IF: 1:20-1:200

## Antibody description

KLHL14-Specific Rabbit Polyclonal antibody. Positive IHC detected in human heart tissue, human cervical cancer tissue. Positive IF detected in HepG2 cells. Positive WB detected in HeLa cells, HepG2 cells, mouse brain tissue, mouse heart tissue, mouse liver tissue, mouse lung tissue, mouse ovary tissue, mouse testis tissue, rat brain tissue, SH-SY5Y cells. Observed molecular weight by Western-blot: 39-44 kDa

## Validations



## Preparation

This antibody was obtained by immunization of Peptide (Accession Number: NM\_020805). Purification method: Antigen affinity purified.

HeLa cells were subjected to SDS PAGE followed by western blot with Catalog No:112093(KLHL14-Specific antibody) at dilution of 1:1000

## Formulation

PBS with 0.02% sodium azide and 50% glycerol pH 7.3.

## Storage

Store at -20°C. DO NOT ALIQUOT

## Clonality

Polyclonal

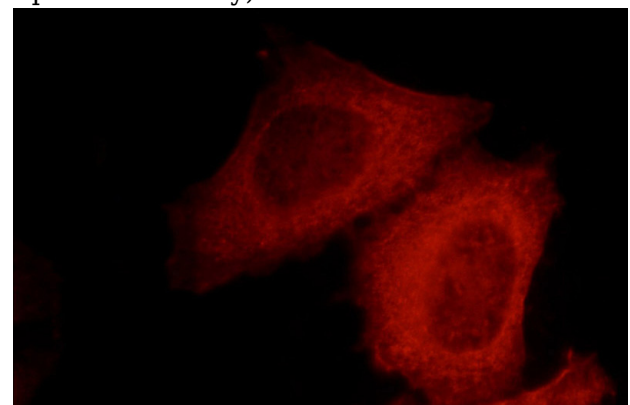
## Ig Type

Rabbit IgG

## Applications

ELISA, WB, IF, IHC

## Dilutions

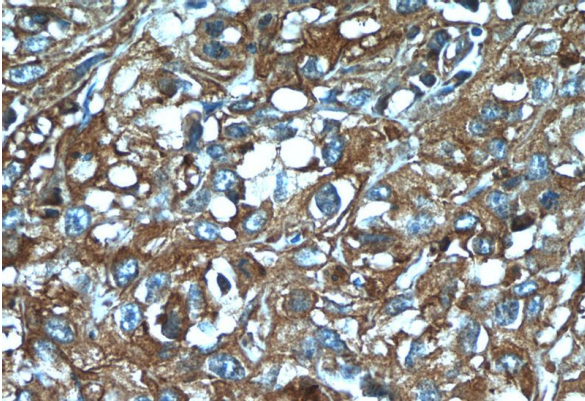


Immunofluorescent analysis of HepG2 cells, using KLHL14 antibody Catalog No:112093 at 1:50 dilution and Rhodamine-labeled goat anti-rabbit IgG (red).

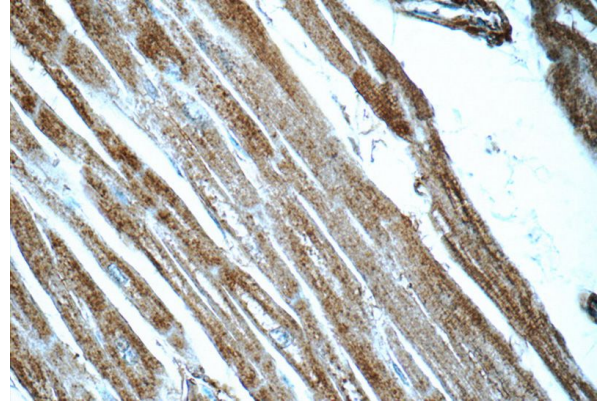
# KLHL14-Specific antibody

Catalog Number: 112093

---



Immunohistochemistry of paraffin-embedded human cervical cancer tissue slide using Catalog No:112093(KLHL14-Specific Antibody) at dilution of 1:50 (under 40x lens)



Immunohistochemistry of paraffin-embedded human heart tissue slide using Catalog No:112093(KLHL14-Specific Antibody) at dilution of 1:50 (under 40x lens)