

KLHL14 antibody



Catalog Number: 112092

Product name

KLHL14 antibody

Specificity

human; other species not tested.

Antibody description

KLHL14 Rabbit Polyclonal antibody. Positive IHC detected in human ovary tumor. Positive WB detected in HEK-293 cells. Observed molecular weight by Western-blot: 55kd,70kd

Preparation

This antibody was obtained by immunization of Peptide (Accession Number: BC021267). Purification method: Antigen affinity purified.

Formulation

PBS with 0.1% sodium azide and 50% glycerol pH 7.3.

Storage

Store at -20°C. DO NOT ALIQUOT

Clonality

Polyclonal

Ig Type

Rabbit IgG

Applications

ELISA, WB, IHC

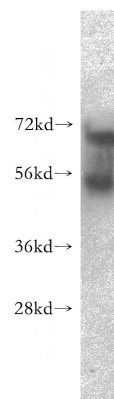
Dilutions

Recommended Dilution:

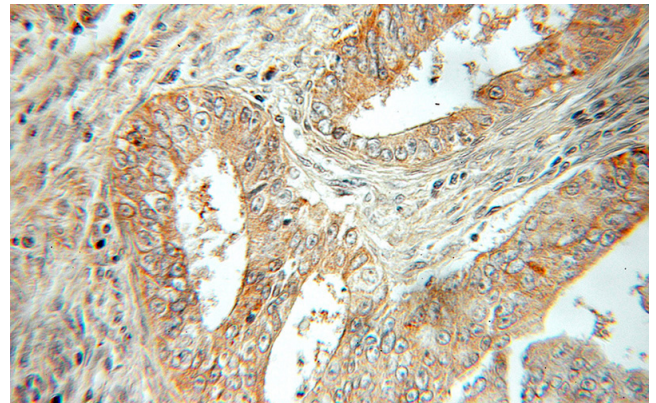
WB: 1:500-1:5000

IHC: 1:20-1:200

Validations



HEK-293 cells were subjected to SDS PAGE followed by western blot with Catalog No:112092(KLHL14 antibody) at dilution of 1:1000



Immunohistochemical of paraffin-embedded human ovary tumor using Catalog No:112092(KLHL14 antibody) at dilution of 1:50 (under 10x lens)