

# KLHL14 antibody

Catalog Number: 112091

## Product name

KLHL14 antibody

## Specificity

Human, Mouse, Rat; other species not tested.

## Antibody description

KLHL14 Rabbit Polyclonal antibody. Positive IF detected in HepG2 cells. Positive WB detected in PC-3 cells, HepG2 cells, MCF7 cells. Observed molecular weight by Western-blot: 39 kDa, 70 kDa

## Preparation

This antibody was obtained by immunization of KLHL14 recombinant protein (Accession Number: BC021267). Purification method: Antigen affinity purified.

## Formulation

PBS with 0.02% sodium azide and 50% glycerol pH 7.3.

## Storage

Store at -20°C. DO NOT ALIQUOT

## Clonality

Polyclonal

## Ig Type

Rabbit IgG

## Applications

ELISA, WB, IF

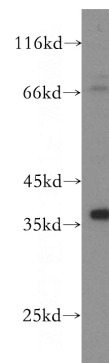
## Dilutions

Recommended Dilution:

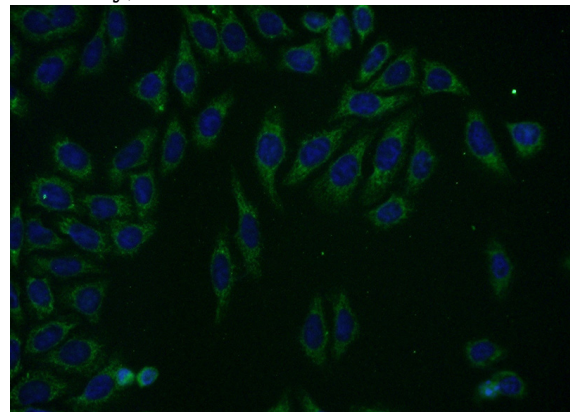
WB: 1:1000-1:10000

IF: 1:20-1:200

## Validations



PC-3 cells were subjected to SDS PAGE followed by western blot with Catalog No:112091(KLHL14 antibody) at dilution of 1:1000



Immunofluorescent analysis of (-20oc Ethanol) fixed HepG2 cells using Catalog No:112091(KLHL14 Antibody) at dilution of 1:50 and Alexa Fluor 488-conjugated AffiniPure Goat Anti-Rabbit IgG(H+L)