

Kir6.1 antibody

Catalog Number: 112066

Product name

Kir6.1 antibody

IP: 1:200-1:1000

IF: 1:10-1:100

Specificity

Human,Mouse,Rat; other species not tested.

Antibody description

Kir6.1 Rabbit Polyclonal antibody. Positive WB detected in mouse spleen tissue. Positive IP detected in mouse spleen tissue. Positive IF detected in HepG2 cells. Observed molecular weight by Western-blot: 51 kDa

Preparation

This antibody was obtained by immunization of Kir6.1 recombinant protein (Accession Number: XM_005253358). Purification method: Antigen affinity purified.

Formulation

PBS with 0.02% sodium azide and 50% glycerol pH 7.3.

Storage

Store at -20°C. DO NOT ALIQUOT

Clonality

Polyclonal

Ig Type

Rabbit IgG

Applications

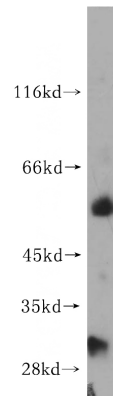
ELISA, WB, IF, IP

Dilutions

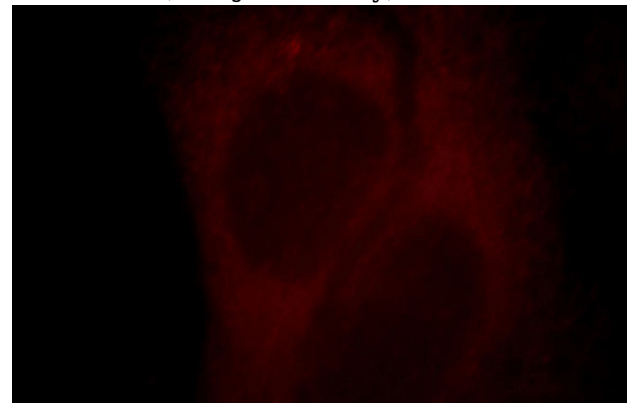
Recommended Dilution:

WB: 1:500-1:5000

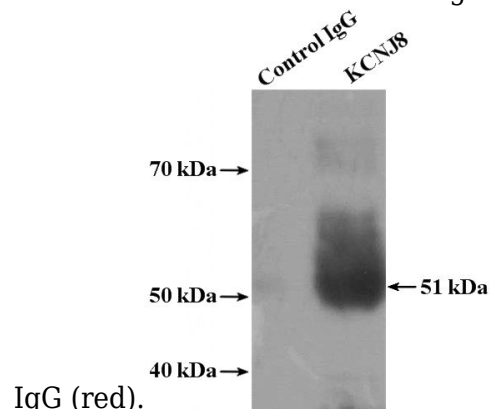
Validations



mouse spleen tissue were subjected to SDS PAGE followed by western blot with Catalog No:112066(KCNJ8 antibody) at dilution of 1:300



Immunofluorescent analysis of HepG2 cells, using KCNJ8 antibody Catalog No:112066 at 1:25 dilution and Rhodamine-labeled goat anti-rabbit



IP Result of anti-KCNJ8 (IP:Catalog No:112066,

Kir6.1 antibody



Catalog Number: 112066

4ug; Detection:Catalog No:112066 1:300) with mouse spleen tissue lysate 4000ug.