

KIFC1 antibody



Catalog Number: 112053

Product name

KIFC1 antibody

IHC: 1:20-1:200

IF: 1:10-1:100

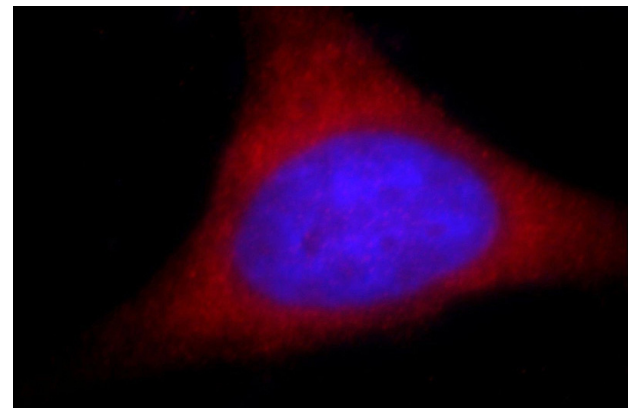
Specificity

Human, Mouse, Rat; other species not tested.

Validations

Antibody description

KIFC1 Rabbit Polyclonal antibody. Positive IHC detected in human testis tissue. Positive IF detected in HeLa cells, HepG2 cells. Positive WB detected in rat testis tissue, HeLa cells, mouse testis tissue, NIH/3T3 cells. Observed molecular weight by Western-blot: 55-70 kDa



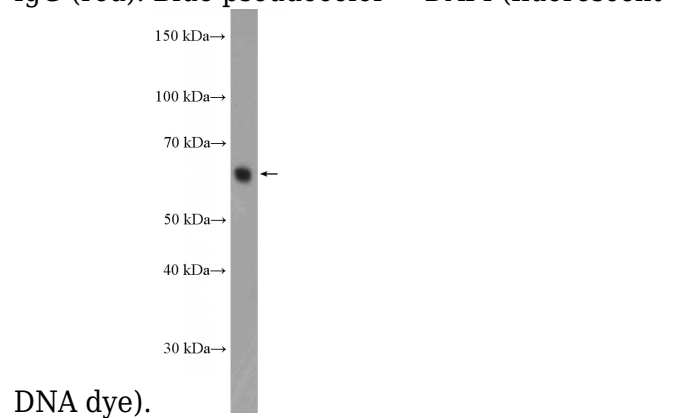
Preparation

This antibody was obtained by immunization of KIFC1 recombinant protein (Accession Number: BC000712). Purification method: Antigen affinity purified.

Immunofluorescent analysis of HeLa cells, using KIFC1 antibody Catalog No:112053 at 1:25 dilution and Rhodamine-labeled goat anti-rabbit IgG (red). Blue pseudocolor = DAPI (fluorescent

Formulation

PBS with 0.02% sodium azide and 50% glycerol pH 7.3.



Storage

Store at -20°C. DO NOT ALIQUOT

Clonality

Polyclonal

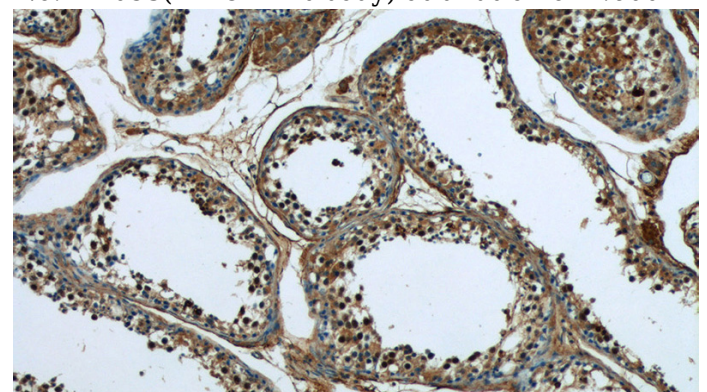
rat testis tissue were subjected to SDS PAGE followed by western blot with Catalog No:112053(KIFC1 Antibody) at dilution of 1:600

Ig Type

Rabbit IgG

Applications

ELISA, IF, IHC, WB



Dilutions

Recommended Dilution:

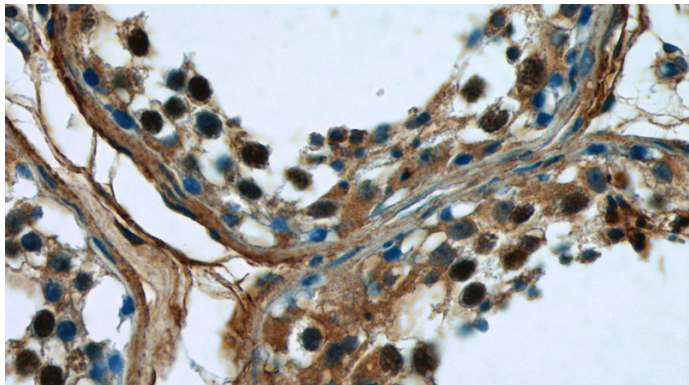
WB: 1:200-1:2000

Immunohistochemistry of paraffin-embedded

KIFC1 antibody

Catalog Number: 112053

human testis tissue slide using Catalog
No:112053(KIFC1 Antibody) at dilution of 1:50
(under 10x lens)



Immunohistochemistry of paraffin-embedded
human testis tissue slide using Catalog
No:112053(KIFC1 Antibody) at dilution of 1:50
(under 40x lens)