

# KIF6 antibody

Catalog Number: 112050

## Product name

KIF6 antibody

## Immunogen

[Human KIF6 Recombinant protein \(GST tag\)](#)

## Specificity

Human, Mouse, Rat; other species not tested.

## Antibody description

KIF6 Rabbit Polyclonal antibody. Positive IHC detected in human liver tissue. Positive IP detected in mouse testis tissue. Positive WB detected in mouse testis tissue. Observed molecular weight by Western-blot: 93 kDa

## Preparation

This antibody was obtained by immunization of KIF6 recombinant protein (Accession Number: NM\_001289024). Purification method: Antigen affinity purified.

## Formulation

PBS with 0.02% sodium azide and 50% glycerol pH 7.3.

## Storage

Store at -20°C. DO NOT ALIQUOT

## Clonality

Polyclonal

## Ig Type

Rabbit IgG

## Applications

ELISA, WB, IHC, IP

## Dilutions

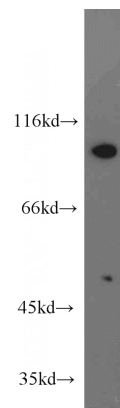
Recommended Dilution:

WB: 1:200-1:2000

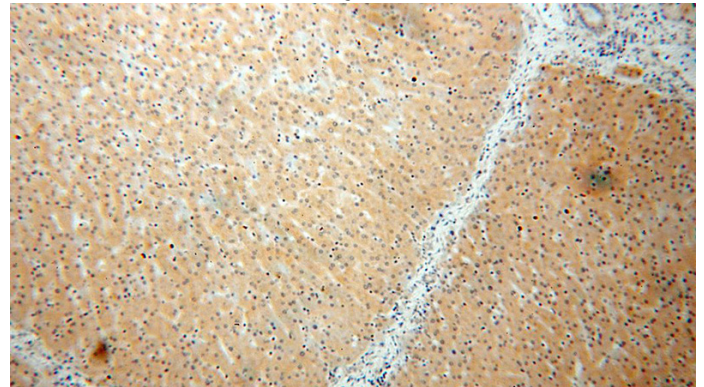
IP: 1:200-1:2000

IHC: 1:20-1:200

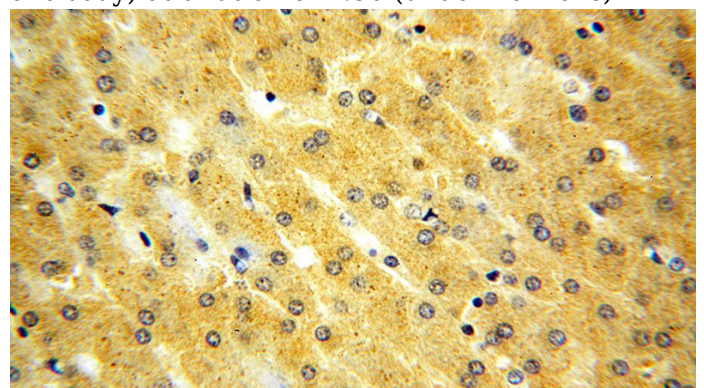
## Validations



mouse testis tissue were subjected to SDS PAGE followed by western blot with Catalog No:112050(KIF6 antibody) at dilution of 1:800



Immunohistochemical of paraffin-embedded human liver using Catalog No:112050(KIF6 antibody) at dilution of 1:50 (under 10x lens)



# KIF6 antibody

Catalog Number: 112050

---

Immunohistochemical of paraffin-embedded human liver using Catalog No:112050(KIF6 antibody) at dilution of 1:50 (under 40x lens)

IP Result of anti-KIF6 (IP:Catalog No:112050, 4ug; Detection:Catalog No:112050 1:500) with mouse testis tissue lysate 4000ug.

