

KIAA0125 antibody

Catalog Number: 112043

Product name

KIAA0125 antibody

Specificity

Human; other species not tested.

Antibody description

KIAA0125 Rabbit Polyclonal antibody. Positive WB detected in Transfected HEK-293 cells. Positive IHC detected in human liver cancer tissue, human placenta tissue.

Preparation

This antibody was obtained by immunization of KIAA0125 recombinant protein (Accession Number: BC030286). Purification method: Antigen affinity purified.

Formulation

PBS with 0.1% sodium azide and 50% glycerol pH 7.3.

Storage

Store at -20°C. DO NOT ALIQUOT

Clonality

Polyclonal

Ig Type

Rabbit IgG

Applications

ELISA, IHC, WB

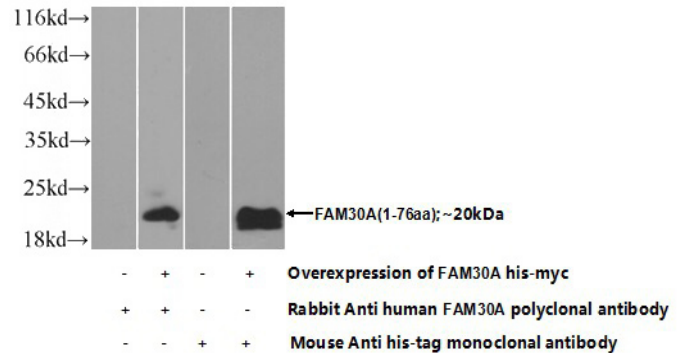
Dilutions

Recommended Dilution:

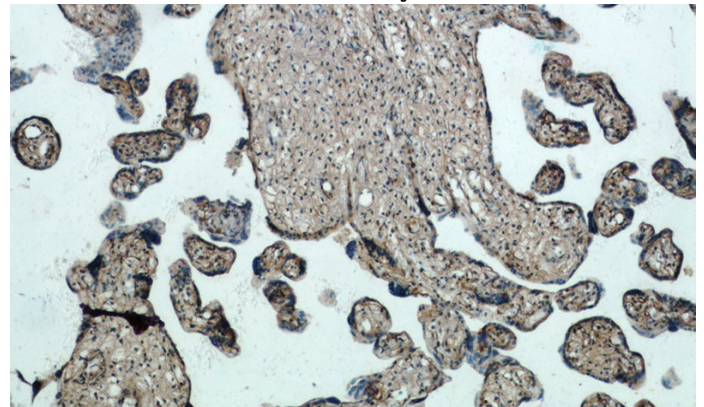
WB: 1:200-1:2000

IHC: 1:20-1:200

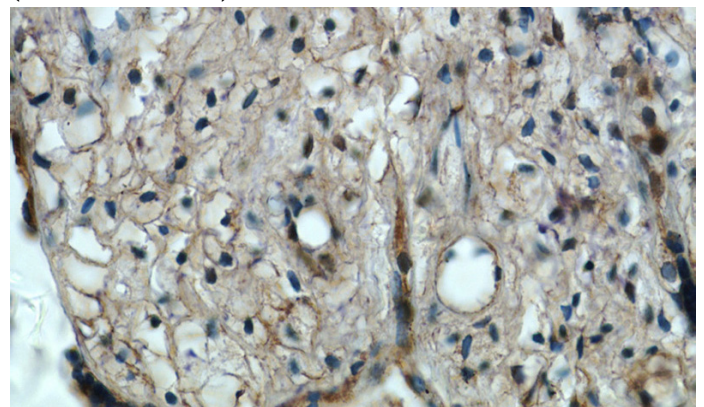
Validations



Transfected HEK-293 cells were subjected to SDS PAGE followed by western blot with Catalog No:112043(FAM30A Antibody) at dilution of 1:700



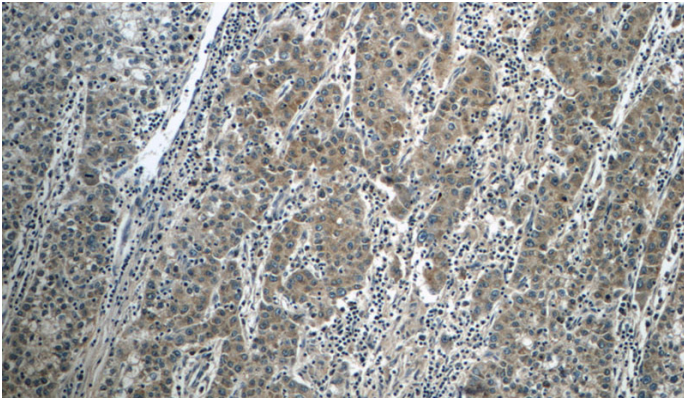
Immunohistochemistry of paraffin-embedded human placenta tissue slide using Catalog No:112043(FAM30A Antibody) at dilution of 1:50 (under 10x lens)



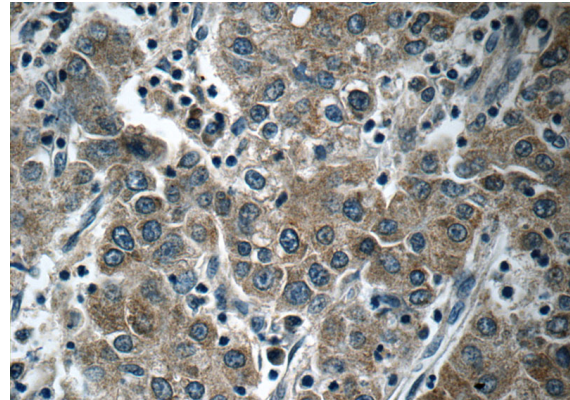
Immunohistochemistry of paraffin-embedded human placenta tissue slide using Catalog No:112043(FAM30A Antibody) at dilution of 1:50 (under 40x lens)

KIAA0125 antibody

Catalog Number: 112043



Immunohistochemistry of paraffin-embedded human liver cancer tissue slide using Catalog No:112043(FAM30A Antibody) at dilution of 1:50 (under 10x lens)



Immunohistochemistry of paraffin-embedded human liver cancer tissue slide using Catalog No:112043(FAM30A Antibody) at dilution of 1:50 (under 40x lens)