

KHDC1 antibody



Catalog Number: 112036

Product name

KHDC1 antibody

IHC: 1:20-1:200

IF: 1:20-1:200

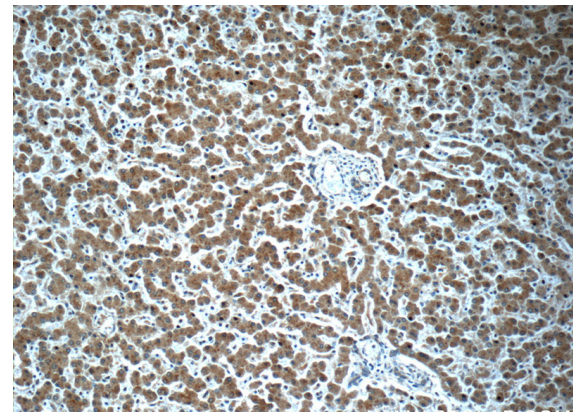
Specificity

Human; other species not tested.

Validations

Antibody description

KHDC1 Rabbit Polyclonal antibody. Positive IF detected in L02 cells. Positive IHC detected in human liver tissue, human stomach tissue. Positive WB detected in L02 cells. Observed molecular weight by Western-blot: 35-40 kDa



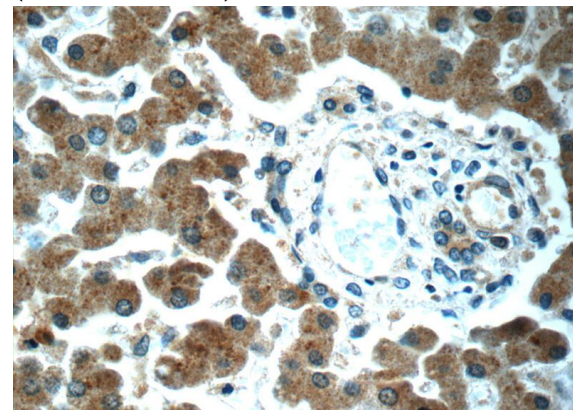
Preparation

This antibody was obtained by immunization of KHDC1 recombinant protein (Accession Number: NM_030568). Purification method: Antigen Affinity purified.

Immunohistochemistry of paraffin-embedded human liver slide using Catalog No:112036(KHDC1 Antibody) at dilution of 1:50 (under 10x lens)

Formulation

PBS with 0.02% sodium azide and 50% glycerol pH 7.3.



Storage

Store at -20°C. DO NOT ALIQUOT

Immunohistochemistry of paraffin-embedded human liver slide using Catalog No:112036(KHDC1 Antibody) at dilution of 1:50 (under 40x lens)

Clonality

Polyclonal

Ig Type

Rabbit IgG

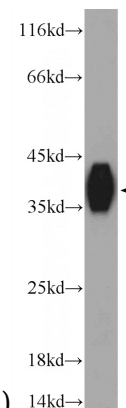
Applications

ELISA, IHC, WB, IF

Dilutions

Recommended Dilution:

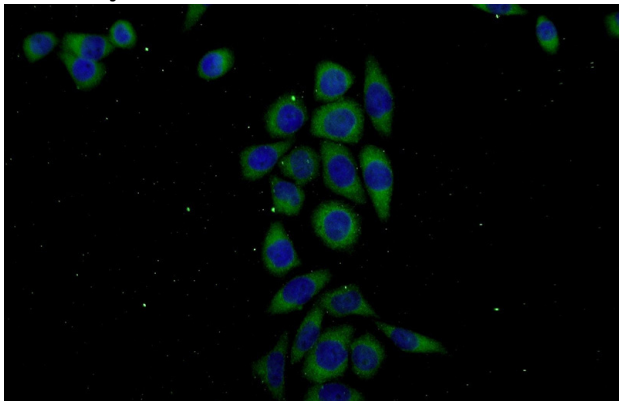
WB: 1:200-1:2000



KHDC1 antibody

Catalog Number: 112036

L02 cells were subjected to SDS PAGE followed by western blot with Catalog No:112036(KHDC1 Antibody) at dilution of 1:600



Immunofluorescent analysis of L02 cells using Catalog No:112036(KHDC1 Antibody) at dilution of 1:50 and Alexa Fluor 488-conjugated AffiniPure Goat Anti-Rabbit IgG(H+L)