

KDM3B antibody



Catalog Number: 112026

Product name

KDM3B antibody

Specificity

Human, Mouse; other species not tested.

Antibody description

KDM3B Rabbit Polyclonal antibody. Positive WB detected in HeLa cells, HEK-293 cells, HepG2 cells, human placenta tissue, mouse liver tissue. Observed molecular weight by Western-blot: 192kd,85kd

Preparation

This antibody was obtained by immunization of KDM3B recombinant protein (Accession Number: BC001202). Purification method: Antigen affinity purified.

Formulation

PBS with 0.02% sodium azide and 50% glycerol pH 7.3.

Storage

Store at -20°C. DO NOT ALIQUOT

Clonality

Polyclonal

Ig Type

Rabbit IgG

Applications

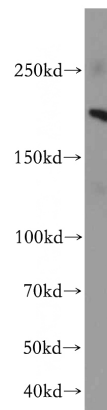
ELISA, WB

Dilutions

Recommended Dilution:

WB: 1:500-1:5000

Validations



HeLa cells were subjected to SDS PAGE followed by western blot with Catalog No:112026(KDM3B antibody) at dilution of 1:500