

# KIF2A antibody

Catalog Number: 112010

## Product name

KIF2A antibody

IP: 1:500-1:5000

IHC: 1:20-1:200

## Specificity

Human, Mouse, Rat; other species not tested.

## Antibody description

KIF2A Rabbit Polyclonal antibody. Positive WB detected in HeLa cells, human brain tissue, mouse brain tissue. Positive IP detected in mouse brain tissue. Positive IHC detected in human breast cancer tissue, human lymphoma tissue. Observed molecular weight by Western-blot: 80-100 kDa

## Preparation

This antibody was obtained by immunization of KIF2A recombinant protein (Accession Number: NM\_001243952). Purification method: Antigen affinity purified.

## Formulation

PBS with 0.1% sodium azide and 50% glycerol pH 7.3.

## Storage

Store at -20°C. DO NOT ALIQUOT

## Clonality

Polyclonal

## Ig Type

Rabbit IgG

## Applications

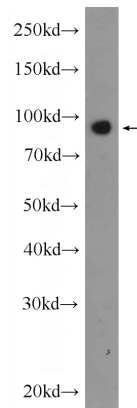
ELISA, WB, IP, IHC

## Dilutions

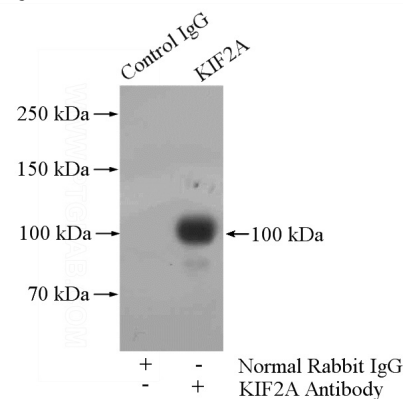
Recommended Dilution:

WB: 1:500-1:5000

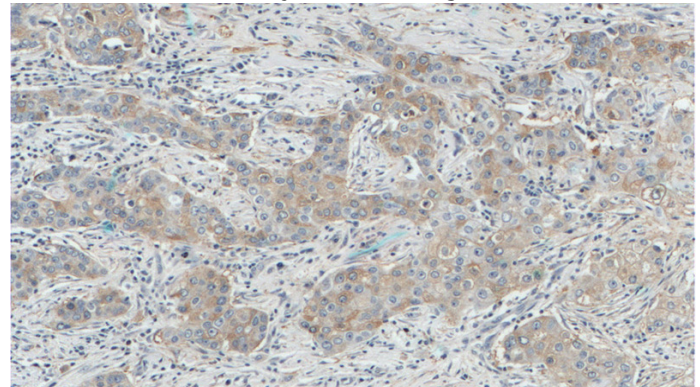
## Validations



HeLa cells were subjected to SDS PAGE followed by western blot with Catalog No:112010(KIF2A Antibody) at dilution of 1:1200



IP Result of anti-KIF2A (IP:Catalog No:112010, 4ug; Detection:Catalog No:112010 1:1000) with mouse brain tissue lysate 4000ug.



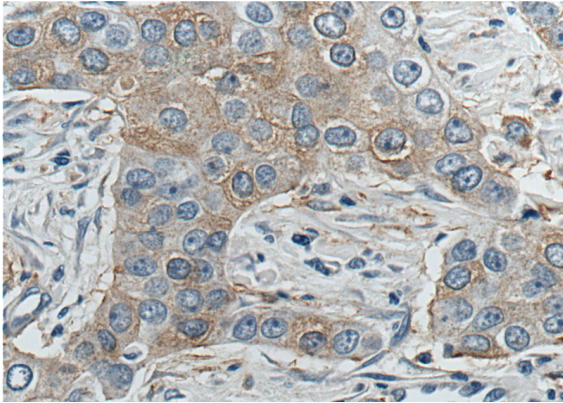
Immunohistochemistry of paraffin-embedded human breast cancer tissue slide using Catalog

# KIF2A antibody

Catalog Number: 112010

---

No:112010(KIF2A Antibody) at dilution of 1:200  
(under 10x lens).



Immunohistochemistry of paraffin-embedded  
human breast cancer tissue slide using Catalog  
No:112010(KIF2A Antibody) at dilution of 1:200  
(under 40x lens).