

# KIF22 antibody

Catalog Number: 112007

## Product name

KIF22 antibody

IP: 1:200-1:1000

IHC: 1:20-1:200

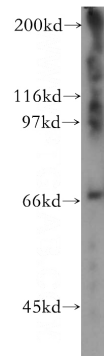
## Specificity

Human, Mouse, Rat; other species not tested.

## Validations

## Antibody description

KIF22 Rabbit Polyclonal antibody. Positive IHC detected in human cervical cancer tissue. Positive IP detected in HeLa cells. Positive WB detected in human heart tissue. Observed molecular weight by Western-blot: 73 kDa



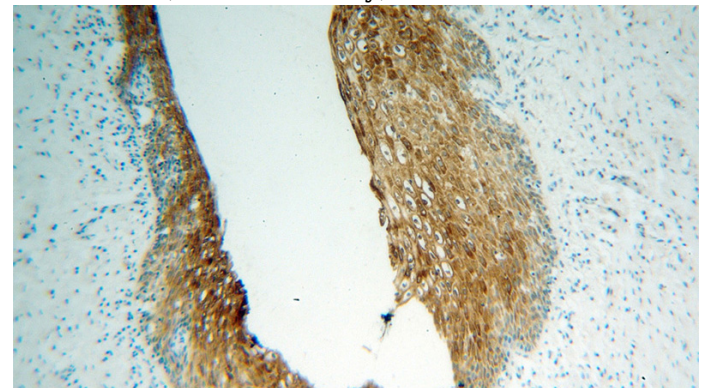
## Preparation

This antibody was obtained by immunization of KIF22 recombinant protein (Accession Number: NM\_007317). Purification method: Antigen affinity purified.

human heart tissue were subjected to SDS PAGE followed by western blot with Catalog No:112007(KIF22 antibody) at dilution of 1:400

## Formulation

PBS with 0.02% sodium azide and 50% glycerol pH 7.3.



## Storage

Store at -20°C. DO NOT ALIQUOT

## Clonality

Polyclonal

Immunohistochemical of paraffin-embedded human cervical cancer using Catalog No:112007(KIF22 antibody) at dilution of 1:100 (under 10x lens)

## Ig Type

Rabbit IgG

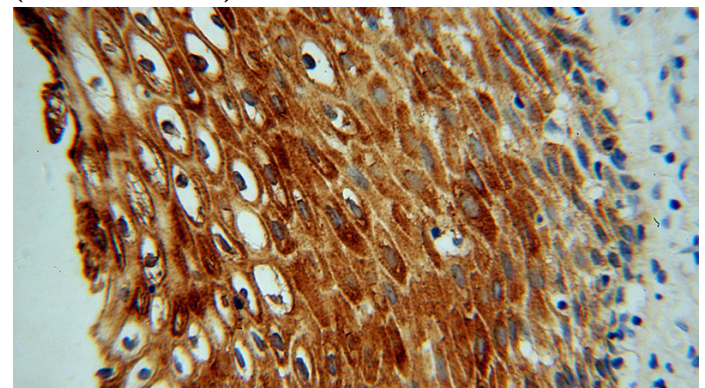
## Applications

ELISA, WB, IHC, IP

## Dilutions

Recommended Dilution:

WB: 1:500-1:5000



Immunohistochemical of paraffin-embedded

# KIF22 antibody

Catalog Number: 112007

---

human cervical cancer using Catalog No:112007(KIF22 antibody) at dilution of 1:100

IP Result of anti-KIF22 (IP:Catalog No:112007, 4ug; Detection:Catalog No:112007 1:300) with HeLa cells lysate 4000ug.

