

KCNIP1 antibody



Catalog Number: 111965

Product name

KCNIP1 antibody

IHC: 1:20-1:200

Specificity

Human, Mouse, Rat; other species not tested.

Antibody description

KCNIP1 Rabbit Polyclonal antibody. Positive IHC detected in human pancreas cancer tissue. Positive FC detected in HepG2 cells. Positive WB detected in human cerebellum tissue, human brain tissue. Observed molecular weight by Western-blot: 25 kDa

Preparation

This antibody was obtained by immunization of KCNIP1 recombinant protein (Accession Number: NM_014592). Purification method: Antigen affinity purified.

Formulation

PBS with 0.02% sodium azide and 50% glycerol pH 7.3.

Storage

Store at -20°C. DO NOT ALIQUOT

Clonality

Polyclonal

Ig Type

Rabbit IgG

Applications

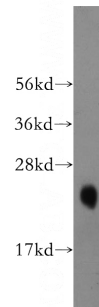
ELISA, WB, IHC, FC

Dilutions

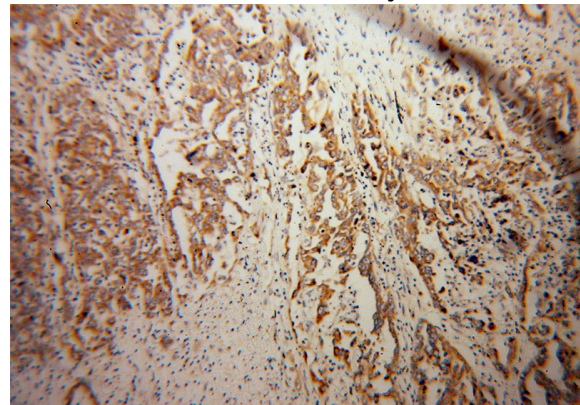
Recommended Dilution:

WB: 1:500-1:5000

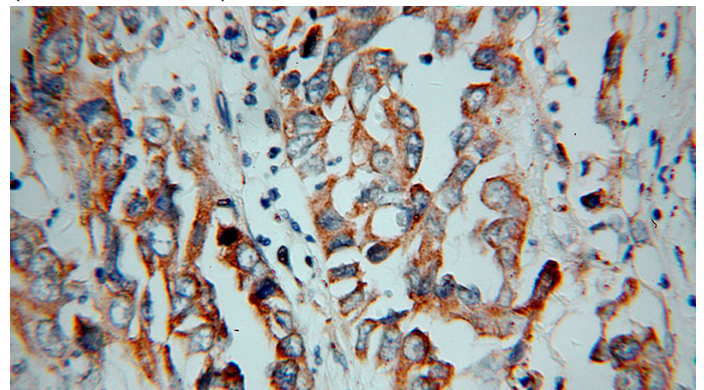
Validations



human cerebellum tissue were subjected to SDS PAGE followed by western blot with Catalog No:111965(KCNIP1 antibody) at dilution of 1:500



Immunohistochemical of paraffin-embedded human pancreas cancer using Catalog No:111965(KCNIP1 antibody) at dilution of 1:100 (under 10x lens)

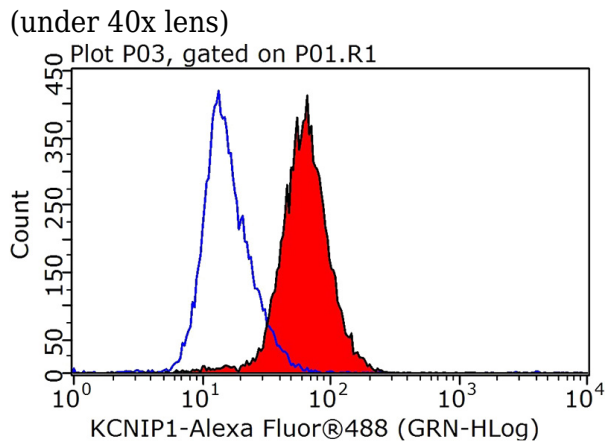


Immunohistochemical of paraffin-embedded human pancreas cancer using Catalog No:111965(KCNIP1 antibody) at dilution of 1:100

KCNIP1 antibody



Catalog Number: 111965



1X10⁶ HepG2 cells were stained with 0.2ug KCNIP1 antibody (Catalog No:111965, red) and control antibody (blue). Fixed with 90% MeOH blocked with 3% BSA (30 min). Alexa Fluor 488-conjugated AffiniPure Goat Anti-Rabbit IgG(H+L) with dilution 1:1000.