

JAM2 antibody

Catalog Number: 111882

Product name

Polyclonal

JAM2 antibody

Ig Type

Specificity

Rabbit IgG

human, mouse, rat; other species not tested.

Applications

Antibody description

ELISA, WB

JAM2 Rabbit Polyclonal antibody. Positive WB detected in human placenta tissue, human heart tissue. Observed molecular weight by Western-blot: 33kd,43kd

Dilutions

Recommended Dilution:

WB: 1:500-1:5000

Preparation

This antibody was obtained by immunization of JAM2 recombinant protein (Accession Number: NM_021219). Purification method: Antigen affinity purified.

Validations

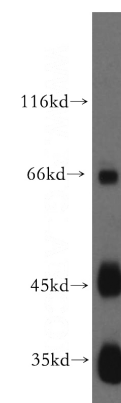
Formulation

PBS with 0.02% sodium azide and 50% glycerol pH 7.3.

Storage

Store at -20°C. DO NOT ALIQUOT

Clonality



human placenta tissue were subjected to SDS PAGE followed by western blot with Catalog No:111882(JAM2 antibody) at dilution of 1:300