

Insulin antibody



Catalog Number: 111853

Product name

Insulin antibody

Specificity

Human, Mouse, Rat; other species not tested.

Antibody description

Insulin Rabbit Polyclonal antibody. Positive WB detected in BxPC-3 cells, mouse pancreas tissue. Positive IHC detected in human pancreas tissue, mouse pancreas tissue, rat pancreas tissue. Observed molecular weight by Western-blot: 30 kDa

Preparation

This antibody was obtained by immunization of Insulin recombinant protein (Accession Number: NM_001185097). Purification method: Antigen affinity purified.

Formulation

PBS with 0.02% sodium azide and 50% glycerol pH 7.3.

Storage

Store at -20°C. DO NOT ALIQUOT

Clonality

Polyclonal

Ig Type

Rabbit IgG

Applications

ELISA, WB, IHC

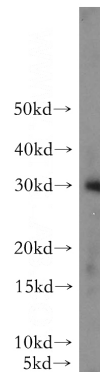
Dilutions

Recommended Dilution:

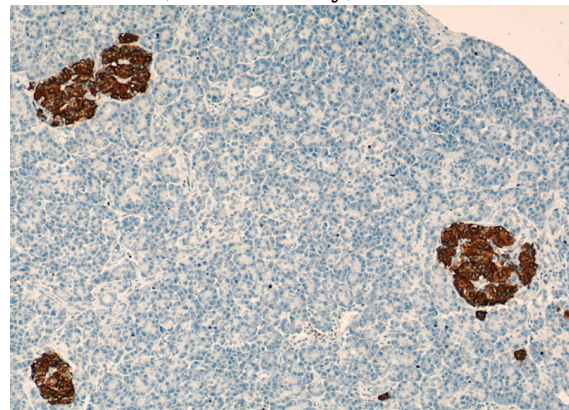
WB: 1:500-1:5000

IHC: 1:20-1:200

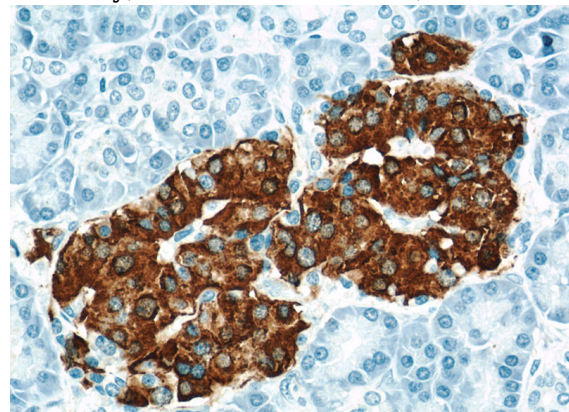
Validations



BxPC-3 cells were subjected to SDS PAGE followed by western blot with Catalog No:111853(INS antibody) at dilution of 1:10000



Immunohistochemical of paraffin-embedded human pancreas using Catalog No:111853(INS antibody) at dilution of 1:500 (under 10x lens)



Immunohistochemical of paraffin-embedded human pancreas using Catalog No:111853(INS antibody) at dilution of 1:500 (under 40x lens)