

INSC antibody

Catalog Number: 111847

Product name

INSC antibody

IHC: 1:20-1:200

IF: 1:10-1:100

Specificity

Human, Mouse, Rat; other species not tested.

Antibody description

INSC Rabbit Polyclonal antibody. Positive WB detected in mouse liver tissue, mouse kidney tissue. Positive IF detected in HeLa cells. Positive IHC detected in human kidney tissue, human liver tissue. Observed molecular weight by Western-blot: 54kd

Preparation

This antibody was obtained by immunization of Peptide (Accession Number: NM_001031853). Purification method: Antigen affinity purified.

Formulation

PBS with 0.02% sodium azide and 50% glycerol pH 7.3.

Storage

Store at -20°C. DO NOT ALIQUOT

Clonality

Polyclonal

Ig Type

Rabbit IgG

Applications

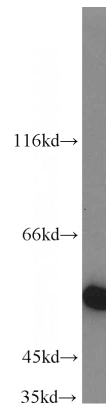
ELISA, WB, IHC, IF

Dilutions

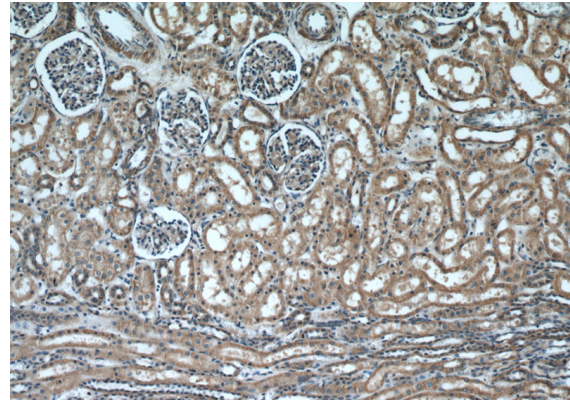
Recommended Dilution:

WB: 1:500-1:5000

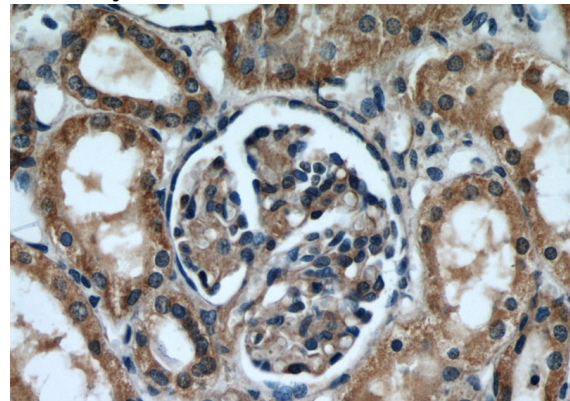
Validations



mouse liver tissue were subjected to SDS PAGE followed by western blot with Catalog No:111847(INSC antibody) at dilution of 1:1000



Immunohistochemical of paraffin-embedded human kidney using Catalog No:111847(INSC antibody) at dilution of 1:50 (under 10x lens)

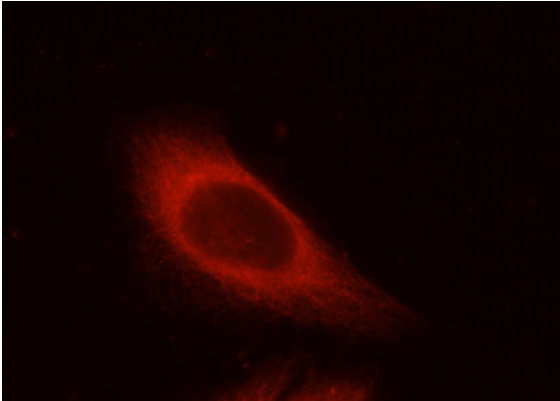


Immunohistochemical of paraffin-embedded human kidney using Catalog No:111847(INSC

INSC antibody

Catalog Number: 111847

antibody) at dilution of 1:50 (under 40x lens)



Immunofluorescent analysis of HeLa cells using Catalog No:111847(INSC Antibody) at dilution of 1:25 and Rhodamine-Goat anti-Rabbit IgG