

IQGAP1 antibody



Catalog Number: 111824

Product name

IQGAP1 antibody

WB: 1:500-1:5000

IHC: 1:20-1:200

Specificity

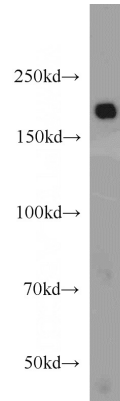
Human, Mouse, Rat; other species not tested.

IF: 1:20-1:200

Antibody description

IQGAP1 Rabbit Polyclonal antibody. Positive WB detected in HeLa cells, A549 cells, HEK-293 cells, HepG2 cells, Jurkat cells, NIH/3T3 cells, SGC-7901 cells. Positive IF detected in HeLa cells. Positive IHC detected in human kidney tissue. Observed molecular weight by Western-blot: 190-195 kDa

Validations



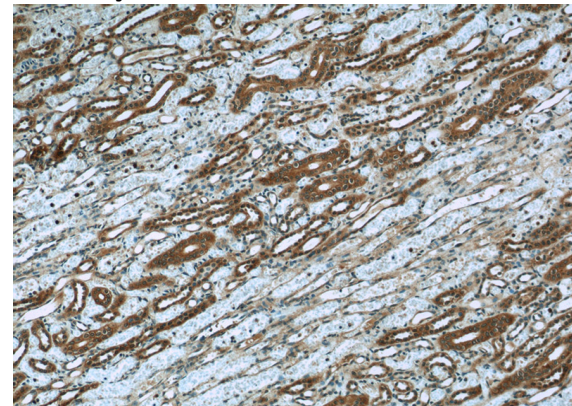
Preparation

This antibody was obtained by immunization of IQGAP1 recombinant protein (Accession Number: NM_003870). Purification method: Antigen affinity purified.

HeLa cells were subjected to SDS PAGE followed by western blot with Catalog No:111824(IQGAP1 antibody) at dilution of 1:1000

Formulation

PBS with 0.02% sodium azide and 50% glycerol pH 7.3.



Storage

Store at -20°C. DO NOT ALIQUOT

Clonality

Polyclonal

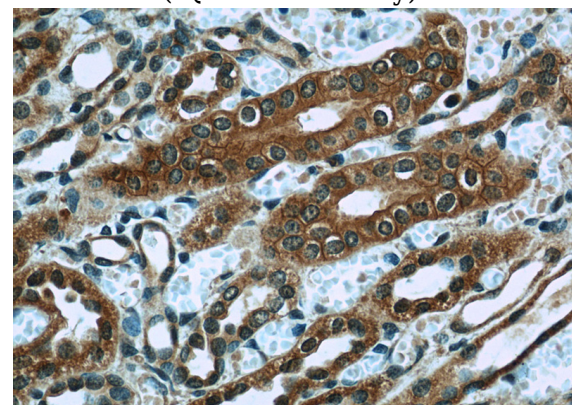
Immunohistochemistry of paraffin-embedded human kidney slide using Catalog No:111824(IQGAP1 Antibody) at dilution of 1:50

Ig Type

Rabbit IgG

Applications

ELISA, WB, IHC, IF



Dilutions

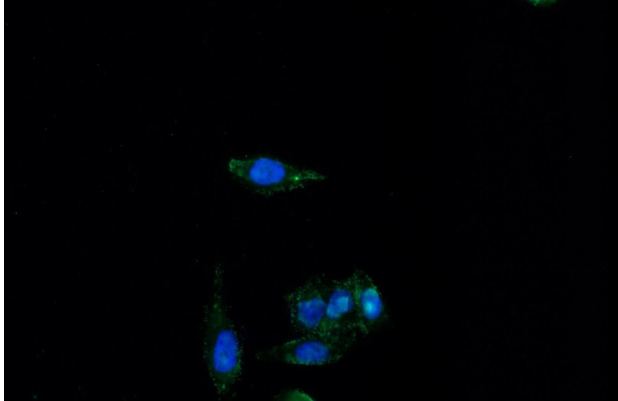
Recommended Dilution:

IQGAP1 antibody



Catalog Number: 111824

Immunohistochemistry of paraffin-embedded human kidney slide using Catalog No:111824(IQGAP1 Antibody) at dilution of 1:50



Immunofluorescent analysis of HeLa cells using Catalog No:111824(IQGAP1 Antibody) at dilution of 1:50 and Alexa Fluor 488-conjugated AffiniPure Goat Anti-Rabbit IgG(H+L)