

iPLA2 antibody

Catalog Number: 111817

Product name

iPLA2 antibody

Immunogen

[Human PLA2G6 Recombinant protein \(His tag\)](#)

Specificity

Human, Mouse; other species not tested.

Antibody description

iPLA2 Rabbit Polyclonal antibody. Positive WB detected in mouse testis tissue. Positive IP detected in mouse testis tissue. Positive IHC detected in human small intestine tissue, human brain tissue. Observed molecular weight by Western-blot: 80 kDa, 88 kDa

Preparation

This antibody was obtained by immunization of iPLA2 recombinant protein (Accession Number: XM_005261764). Purification method: Antigen affinity purified.

Formulation

PBS with 0.02% sodium azide and 50% glycerol pH 7.3.

Storage

Store at -20°C. DO NOT ALIQUOT

Clonality

Polyclonal

Ig Type

Rabbit IgG

Applications

ELISA, WB, IHC, IP

Dilutions

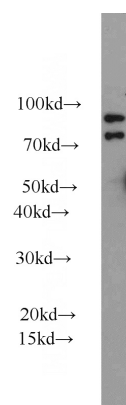
Recommended Dilution:

WB: 1:500-1:5000

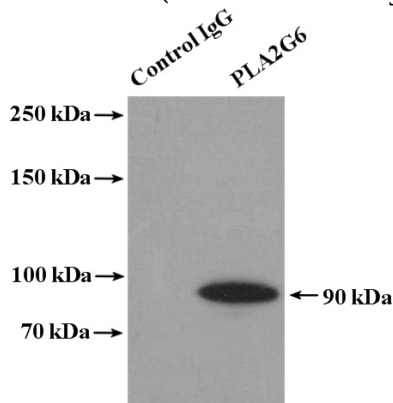
IP: 1:200-1:2000

IHC: 1:20-1:200

Validations



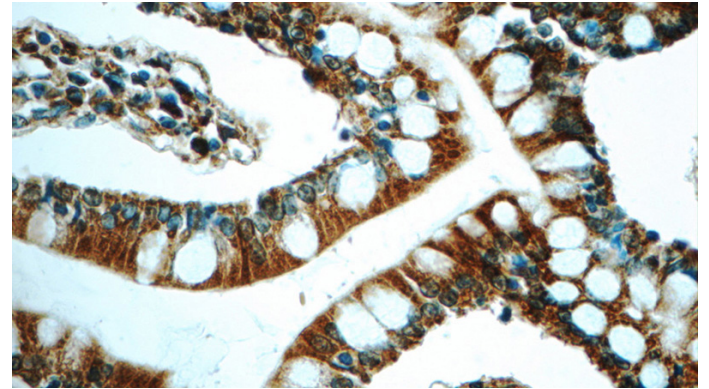
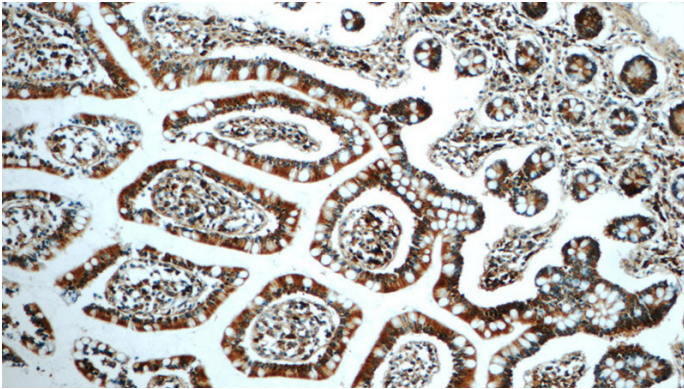
mouse testis tissue were subjected to SDS PAGE followed by western blot with Catalog No:111817(PLA2G6 antibody) at dilution of 1:1000



IP Result of anti-PLA2G6 (IP:Catalog No:111817, 4ug; Detection:Catalog No:111817 1:800) with mouse testis tissue lysate 4000ug.

iPLA2 antibody

Catalog Number: 111817



Immunohistochemistry of paraffin-embedded human small intestine tissue slide using Catalog No:111817(PLA2G6 Antibody) at dilution of 1:50 (under 10x lens)

Immunohistochemistry of paraffin-embedded human small intestine tissue slide using Catalog No:111817(PLA2G6 Antibody) at dilution of 1:50 (under 40x lens)