

# Human IgA Heavy Chain antibody



Catalog Number: 111720

## Product name

Human IgA Heavy Chain antibody

## Specificity

Human; other species not tested.

## Antibody description

Human IgA Heavy Chain Rabbit Polyclonal antibody. Positive WB detected in human plasma tissue, human lung tissue. Observed molecular weight by Western-blot: 53 kDa

## Preparation

This antibody was obtained by immunization of Human IgA Heavy Chain recombinant protein (Accession Number: BC016369). Purification method: Antigen affinity purified.

## Formulation

PBS with 0.1% sodium azide and 50% glycerol pH 7.3.

## Storage

Store at -20°C. DO NOT ALIQUOT

## Clonality

Polyclonal

## Ig Type

Rabbit IgG

## Applications

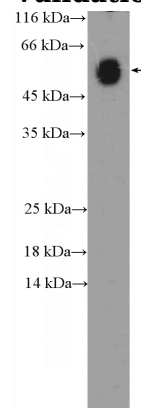
ELISA, WB

## Dilutions

Recommended Dilution:

WB: 1:5000-1:50000

## Validations



human plasma (0.3 ug) tissue were subjected to SDS PAGE followed by western blot with Catalog No:111720(Human IgA Antibody) at dilution of 1:1000. (1 Sec exposure)