

HTRA2 antibody

Catalog Number: 111715

Product name

HTRA2 antibody

Specificity

Human, Mouse, Rat, Monkey; other species not tested.

Antibody description

HTRA2 Rabbit Polyclonal antibody. Positive IP detected in Raji cells. Positive WB detected in HEK-293 cells, COS-7 cells, HeLa cells, human heart tissue, Jurkat cells, MCF7 cells, mouse skeletal muscle tissue, Raji cells. Positive IHC detected in human kidney tissue, human colon tissue, human thyroid tissue. Observed molecular weight by Western-blot: 36 kDa

Preparation

This antibody was obtained by immunization of HTRA2 recombinant protein (Accession Number: NM_013247). Purification method: Antigen affinity purified.

Formulation

PBS with 0.02% sodium azide and 50% glycerol pH 7.3.

Storage

Store at -20°C. DO NOT ALIQUOT

Clonality

Polyclonal

Ig Type

Rabbit IgG

Applications

ELISA, WB, IHC, IP

Dilutions

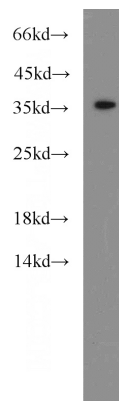
Recommended Dilution:

WB: 1:1000-1:10000

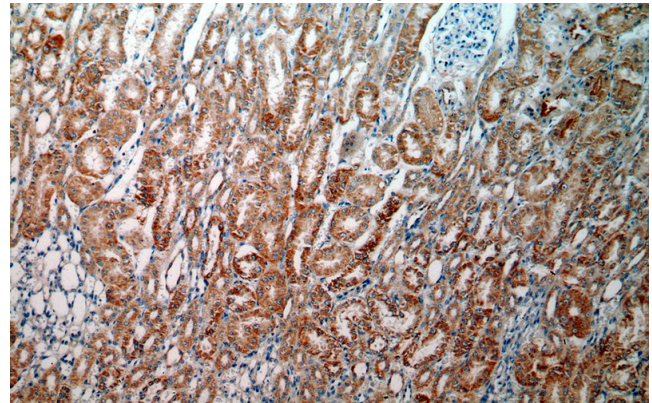
IP: 1:200-1:2000

IHC: 1:20-1:200

Validations



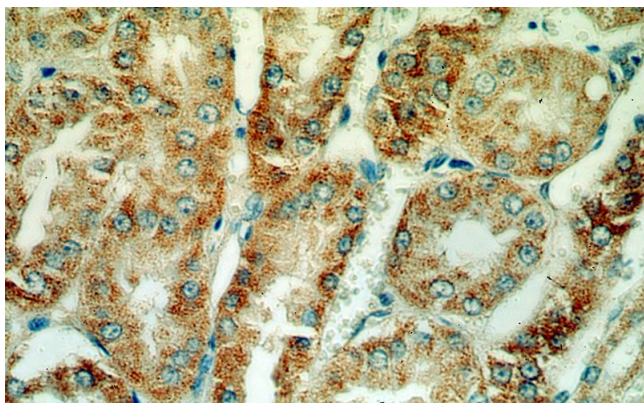
HEK-293 cells were subjected to SDS PAGE followed by western blot with Catalog No:111715(HTRA2 antibody) at dilution of 1:2000



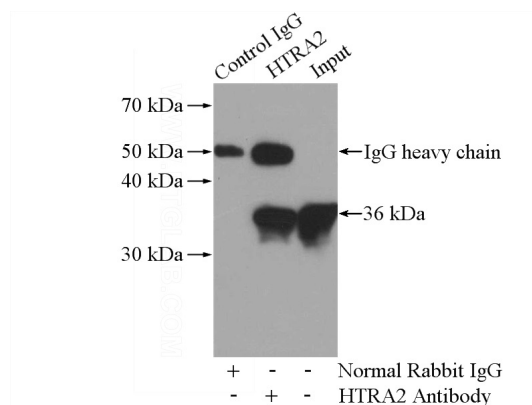
Immunohistochemical of paraffin-embedded human kidney using Catalog No:111715(HTRA2 antibody) at dilution of 1:100 (under 10x lens)

HTRA2 antibody

Catalog Number: 111715



Immunohistochemical of paraffin-embedded human kidney using Catalog No:111715(HTRA2 antibody) at dilution of 1:100 (under 40x lens)



IP Result of anti-HTRA2 (IP:Catalog No:111715, 4ug; Detection:Catalog No:111715 1:500) with Raji cells lysate 2000ug.