

HSPB2 antibody



Catalog Number: 111700

Product name

HSPB2 antibody

IHC: 1:20-1:200

IF: 1:10-1:100

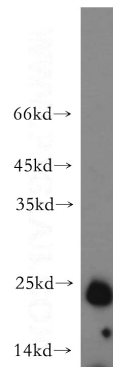
Specificity

Human, Mouse, Rat; other species not tested.

Antibody description

HSPB2 Rabbit Polyclonal antibody. Positive WB detected in human skeletal muscle tissue, rat heart tissue. Positive IF detected in HepG2 cells. Positive IHC detected in human heart tissue, human skeletal muscle tissue. Observed molecular weight by Western-blot: 20-25kd

Validations



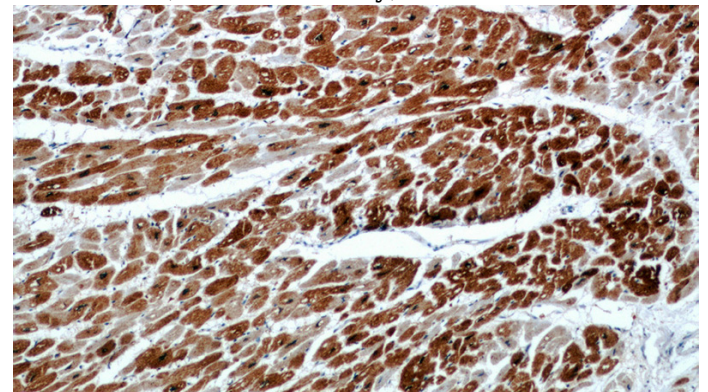
Preparation

This antibody was obtained by immunization of HSPB2 recombinant protein (Accession Number: NM_001541). Purification method: Antigen affinity purified.

human skeletal muscle tissue were subjected to SDS PAGE followed by western blot with Catalog No:111700(HSP27 antibody) at dilution of 1:300

Formulation

PBS with 0.02% sodium azide and 50% glycerol pH 7.3.



Storage

Store at -20°C. DO NOT ALIQUOT

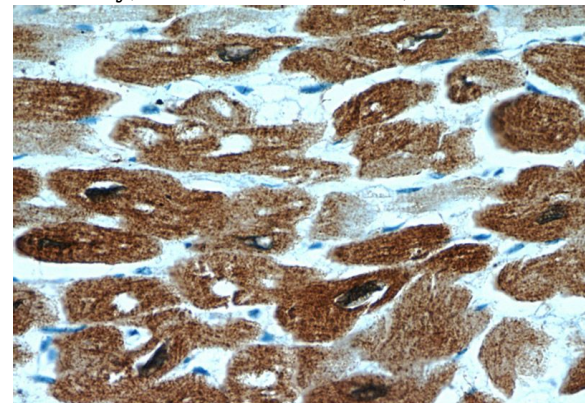
Clonality

Polyclonal

Immunohistochemical of paraffin-embedded human heart using Catalog No:111700(HSP27 antibody) at dilution of 1:50 (under 10x lens)

Ig Type

Rabbit IgG



Applications

ELISA, WB, IHC, IF

Dilutions

Recommended Dilution:

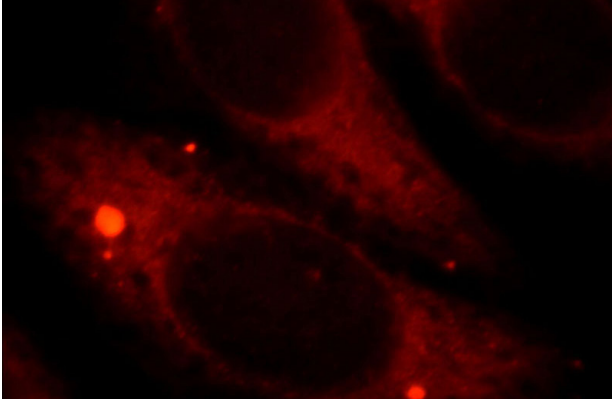
WB: 1:500-1:5000

Immunohistochemical of paraffin-embedded human heart using Catalog No:111700(HSP27

HSPB2 antibody

Catalog Number: 111700

antibody) at dilution of 1:50 (under 40x lens)



Immunofluorescent analysis of HepG2 cells, using HSPB2 antibody Catalog No:111700 at 1:25 dilution and Rhodamine-labeled goat anti-rabbit IgG (red).