

IgG light chain (Kappa) antibody



Catalog Number: 111692

Product name

IgG light chain (Kappa) antibody

Specificity

Human, Mouse; other species not tested.

Antibody description

IgG light chain (Kappa) Rabbit Polyclonal antibody. Positive WB detected in human plasma tissue, A549 cells, K-562 cells, mouse spleen tissue. Observed molecular weight by Western-blot: 26 kDa, 13 kDa

Preparation

This antibody was obtained by immunization of IgG light chain (Kappa) recombinant protein (Accession Number: BC030814). Purification method: Antigen affinity purified.

Formulation

PBS with 0.1% sodium azide and 50% glycerol pH 7.3.

Storage

Store at -20°C. DO NOT ALIQUOT

Clonality

Polyclonal

Ig Type

Rabbit IgG

Applications

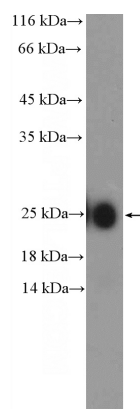
ELISA, WB

Dilutions

Recommended Dilution:

WB: 1:500-1:5000

Validations



human plasma (0.3ug) tissue were subjected to SDS PAGE followed by western blot with Catalog No:111692(IgG light chain (Kappa) Antibody) at dilution of 1:1000