

# IgG light chain (Kappa) antibody



Catalog Number: 111691

## Product name

IgG light chain (Kappa) antibody

Recommended Dilution:

WB: 1:500-1:5000

## Specificity

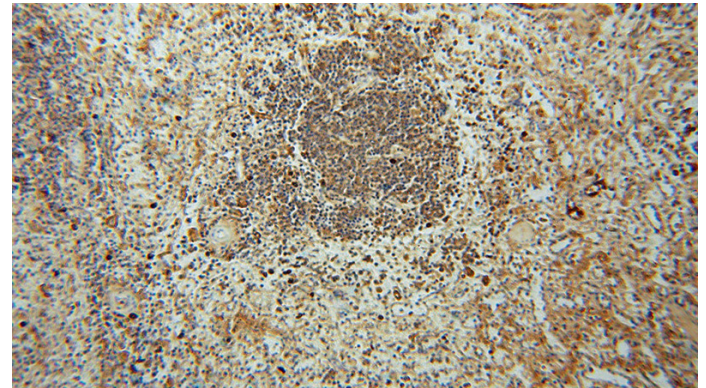
Human, Mouse; other species not tested.

IHC: 1:20-1:200

## Antibody description

IgG light chain (Kappa) Rabbit Polyclonal antibody. Positive IHC detected in human spleen tissue, human heart tissue, human placenta tissue, human skin tissue, human testis tissue, mouse spleen tissue. Positive WB detected in human plasma tissue, human liver tissue, mouse skeletal muscle tissue. Observed molecular weight by Western-blot: 26 kDa

## Validations



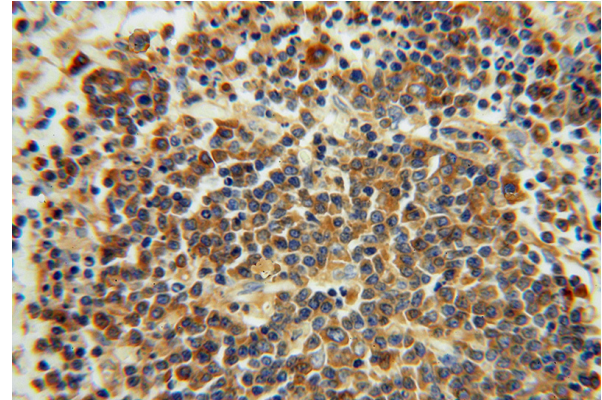
## Preparation

This antibody was obtained by immunization of IgG light chain (Kappa) recombinant protein (Accession Number: BC030813). Purification method: Antigen affinity purified.

Immunohistochemical of paraffin-embedded human spleen using Catalog No:111691(IGK-antibody) at dilution of 1:100 (under 10x lens)

## Formulation

PBS with 0.02% sodium azide and 50% glycerol pH 7.3.



## Storage

Store at -20°C. DO NOT ALIQUOT

Immunohistochemical of paraffin-embedded human spleen using Catalog No:111691(IGK-antibody) at dilution of 1:100 (under 40x lens)

## Clonality

Polyclonal

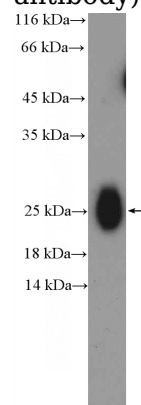
## Ig Type

Rabbit IgG

## Applications

ELISA, IHC, WB

## Dilutions



# IgG light chain (Kappa) antibody



Catalog Number: 111691

---

human plasma (0.3ug) tissue were subjected to SDS PAGE followed by western blot with Catalog

No:111691(IgG light chain (Kappa) Antibody) at dilution of 1:1000