

IGF1A-Specific antibody



Catalog Number: 111676

Product name

IGF1A-Specific antibody

Specificity

Human, Mouse, Rat; other species not tested.

Antibody description

IGF1A-Specific Rabbit Polyclonal antibody. Positive WB detected in mouse testis tissue, L02 cells, mouse liver tissue, mouse ovary tissue, mouse uterus tissue, PC-3 cells. Positive IP detected in mouse liver tissue. Positive IHC detected in human liver tissue, human liver cancer tissue. Positive IF detected in HepG2 cells, HeLa cells. Observed molecular weight by Western-blot: 15-20 kDa

Preparation

This antibody was obtained by immunization of Peptide. Purification method: Antigen affinity purified.

Formulation

PBS with 0.02% sodium azide and 50% glycerol pH 7.3.

Storage

Store at -20°C. DO NOT ALIQUOT

Clonality

Polyclonal

Ig Type

Rabbit IgG

Applications

ELISA, WB, IP, IF, IHC

Dilutions

Recommended Dilution:

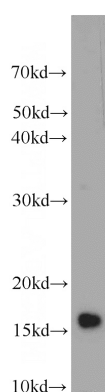
WB: 1:200-1:2000

IP: 1:200-1:1000

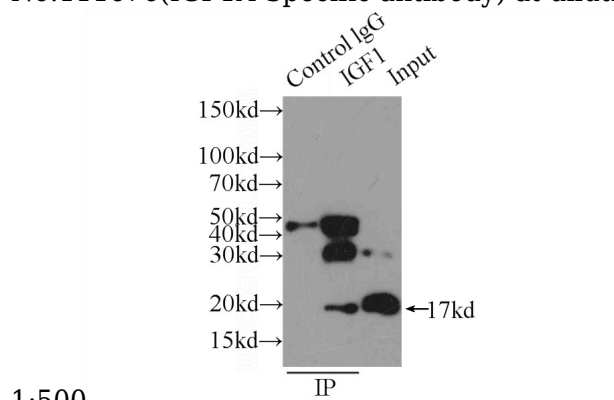
IHC: 1:20-1:200

IF: 1:20-1:200

Validations



mouse testis tissue were subjected to SDS PAGE followed by western blot with Catalog No:111676(IGF1A-Specific antibody) at dilution of

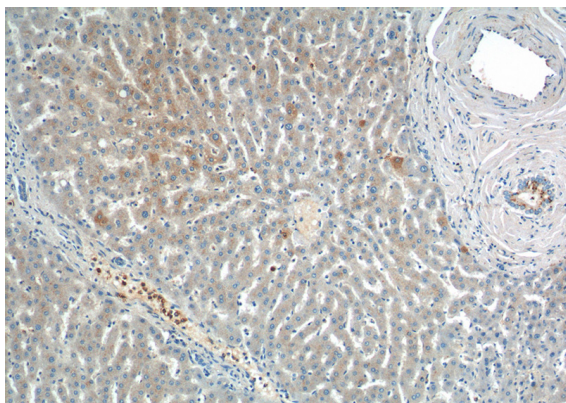


1:500

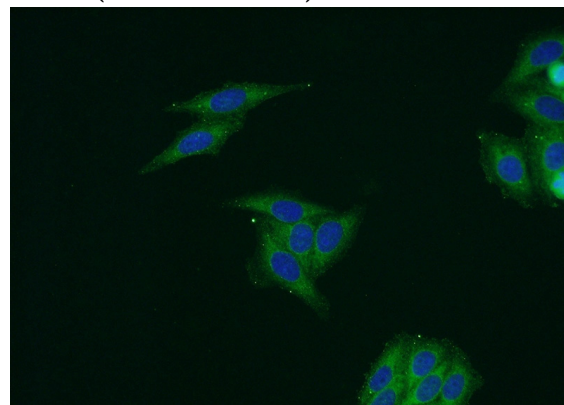
IP Result of anti-IGF1A-Specific (IP:Catalog No:111676, 3ug; Detection:Catalog No:111676 1:300) with mouse liver tissue lysate 5000ug.

IGF1A-Specific antibody

Catalog Number: 111676



Immunohistochemistry of paraffin-embedded human liver tissue slide using Catalog No:111676(IGF1A-Specific Antibody) at dilution of 1:200 (under 40x lens).



Immunofluorescent analysis of HepG2 cells using Catalog No:111676(IGF1A-Specific Antibody) at dilution of 1:50 and Alexa Fluor 488-conjugated AffiniPure Goat Anti-Rabbit IgG(H+L)

Immunohistochemistry of paraffin-embedded human liver tissue slide using Catalog No:111676(IGF1A-Specific Antibody) at dilution of 1:200 (under 10x lens).

