

# IκB alpha antibody

Catalog Number: 111641

## Product name

IκB alpha antibody

Recommended Dilution:

WB: 1:500-1:5000

## Specificity

Human; other species not tested.

IP: 1:200-1:2000

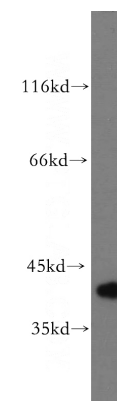
IHC: 1:50-1:500

## Antibody description

IκB alpha Rabbit Polyclonal antibody. Positive IHC detected in human kidney tissue, human liver tissue, human prostate cancer tissue, human stomach tissue. Positive IF detected in HeLa cells. Positive WB detected in HL-60 cells, HeLa cells, Jurkat cells. Positive IP detected in HeLa cells. Observed molecular weight by Western-blot: 39 kDa

IF: 1:10-1:100

## Validations



HL-60 cells were subjected to SDS PAGE followed by western blot with Catalog No:111641(NFKBIA antibody) at dilution of 1:500

## Preparation

This antibody was obtained by immunization of IκB alpha recombinant protein (Accession Number: NM\_020529). Purification method: Antigen affinity purified.

## Formulation

PBS with 0.02% sodium azide and 50% glycerol pH 7.3.

## Storage

Store at -20°C. DO NOT ALIQUOT

## Clonality

Polyclonal

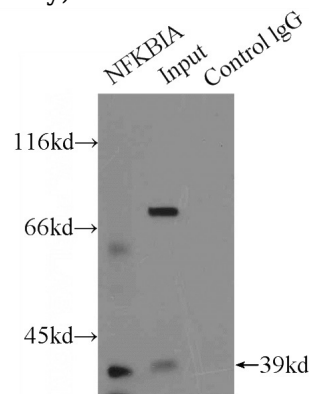
## Ig Type

Rabbit IgG

## Applications

ELISA, WB, IP, IF, IHC

## Dilutions

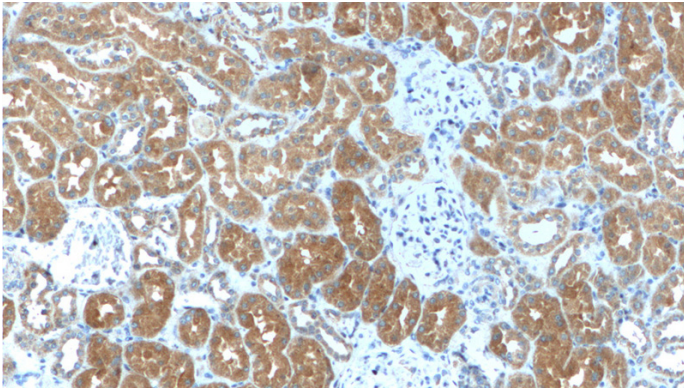


IP Result of anti-NFKBIA (IP:Catalog No:111641, 5ug; Detection:Catalog No:111641 1:500) with HeLa cells lysate 2000ug.

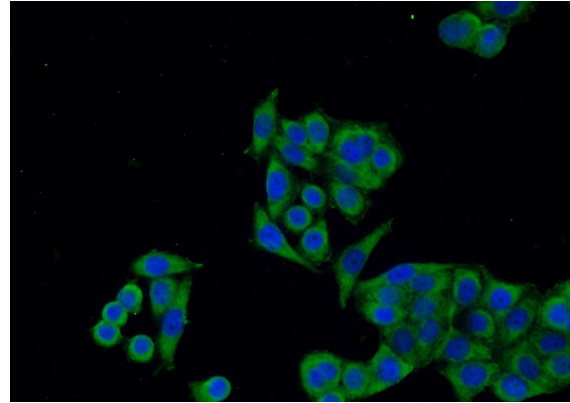
# IκB alpha antibody

Catalog Number: 111641

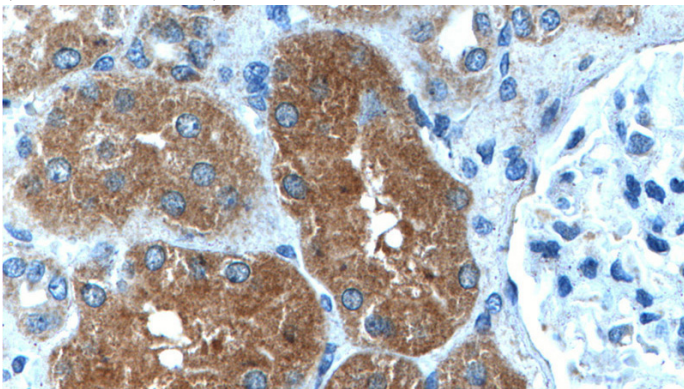
---



Immunohistochemistry of paraffin-embedded human kidney tissue slide using Catalog No:111641(NFKBIA Antibody) at dilution of 1:200 (under 40x lens).



Immunofluorescent analysis of HeLa cells using Catalog No:111641(NFKBIA Antibody) at dilution of 1:25 and Alexa Fluor 488-conjugated AffiniPure Goat Anti-Rabbit IgG(H+L)



Immunohistochemistry of paraffin-embedded human kidney tissue slide using Catalog No:111641(NFKBIA Antibody) at dilution of 1:200 (under 10x lens).