

IGSF11 antibody



Catalog Number: 111633

Product name

IGSF11 antibody

IHC: 1:20-1:200

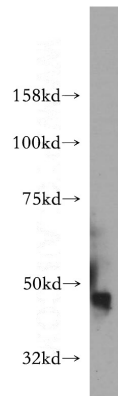
Specificity

human, mouse, rat; other species not tested.

Antibody description

IGSF11 Rabbit Polyclonal antibody. Positive IHC detected in human kidney. Positive WB detected in human brain tissue, mouse skeletal muscle tissue. Observed molecular weight by Western-blot: 40-50kd

Validations



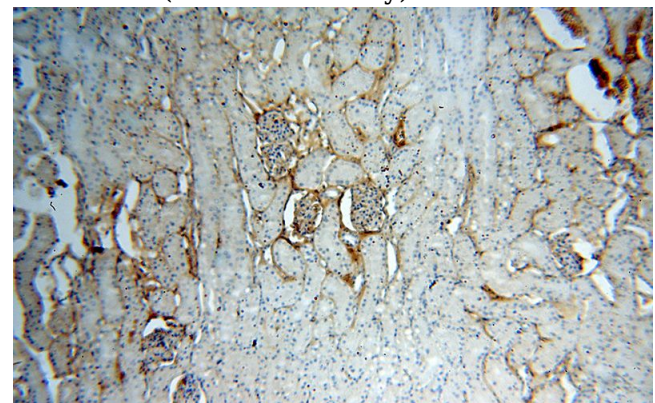
Preparation

This antibody was obtained by immunization of IGSF11 recombinant protein (Accession Number: XM_011512470). Purification method: Antigen affinity purified.

human brain tissue were subjected to SDS PAGE followed by western blot with Catalog No:111633(IGSF11 antibody) at dilution of 1:500

Formulation

PBS with 0.02% sodium azide and 50% glycerol pH 7.3.



Storage

Store at -20°C. DO NOT ALIQUOT

Immunohistochemical of paraffin-embedded human kidney using Catalog No:111633(IGSF11 antibody) at dilution of 1:50 (under 10x lens)

Clonality

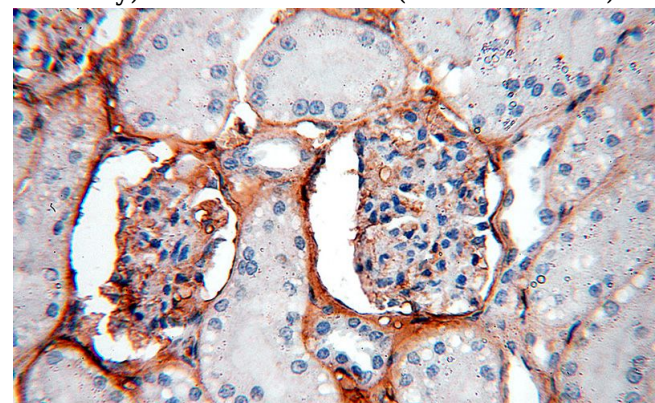
Polyclonal

Ig Type

Rabbit IgG

Applications

ELISA, WB, IHC



Dilutions

Recommended Dilution:

WB: 1:200-1:2000

Immunohistochemical of paraffin-embedded human kidney using Catalog No:111633(IGSF11 antibody) at dilution of 1:50 (under 40x lens)