

# IFFO1 antibody



Catalog Number: 111614

## Product name

IFFO1 antibody

IHC: 1:20-1:200

IF: 1:10-1:100

## Specificity

Human, Mouse, Rat; other species not tested.

## Antibody description

IFFO1 Rabbit Polyclonal antibody. Positive IF detected in Hela cells. Positive IHC detected in human brain tissue. Positive WB detected in mouse brain tissue, human brain tissue, mouse testis tissue. Observed molecular weight by Western-blot: 75-85 kDa

## Preparation

This antibody was obtained by immunization of IFFO1 recombinant protein (Accession Number: BC004384). Purification method: Antigen affinity purified.

## Formulation

PBS with 0.02% sodium azide and 50% glycerol pH 7.3.

## Storage

Store at -20°C. DO NOT ALIQUOT

## Clonality

Polyclonal

## Ig Type

Rabbit IgG

## Applications

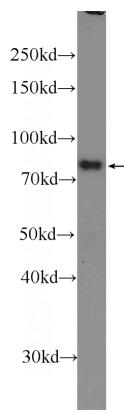
ELISA, IHC, IF, WB

## Dilutions

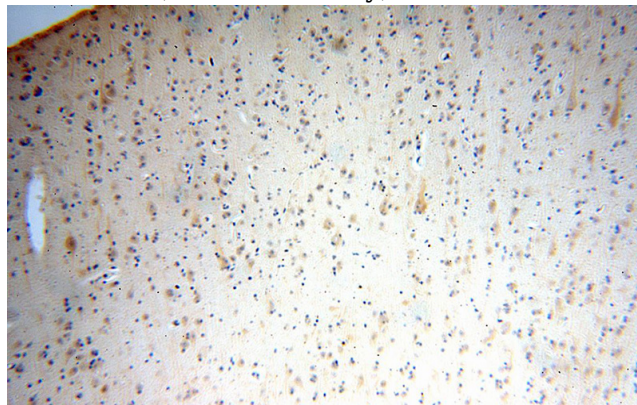
Recommended Dilution:

WB: 1:500-1:5000

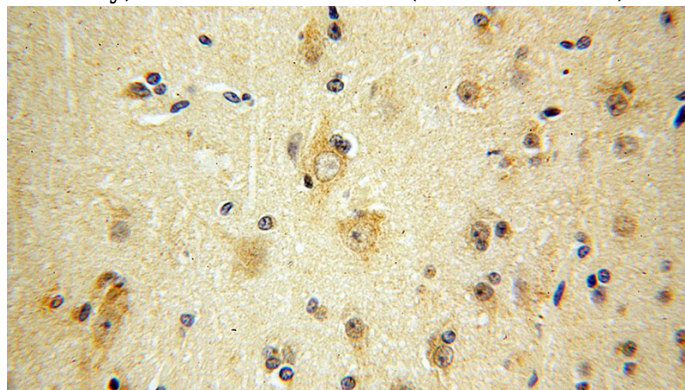
## Validations



mouse brain tissue were subjected to SDS PAGE followed by western blot with Catalog No:111614(IFFO1 Antibody) at dilution of 1:1000



Immunohistochemical of paraffin-embedded human brain using Catalog No:111614(IFFO1 antibody) at dilution of 1:100 (under 10x lens)



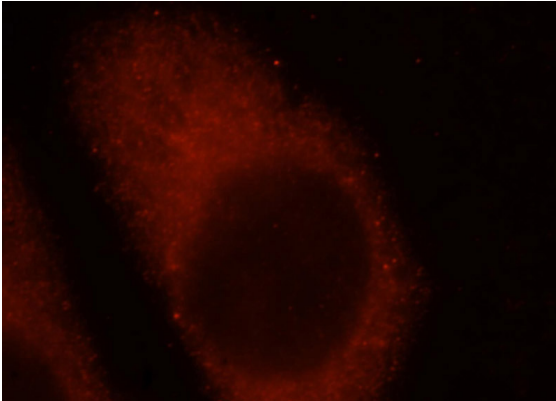
Immunohistochemical of paraffin-embedded human brain using Catalog No:111614(IFFO1

# IFFO1 antibody

Catalog Number: 111614

---

antibody) at dilution of 1:100 (under 40x lens)



Immunofluorescent analysis of HeLa cells, using IFFO1 antibody Catalog No:111614 at 1:25 dilution and Rhodamine-labeled goat anti-rabbit IgG (red).