

IDH2 antibody



Catalog Number: 111603

Product name

IDH2 antibody

IHC: 1:20-1:200

IF: 1:20-1:200

Specificity

Human, Mouse, Rat; other species not tested.

Antibody description

IDH2 Rabbit Polyclonal antibody. Positive IF detected in HepG2 cells. Positive IHC detected in human heart tissue. Positive WB detected in HEK-293 cells, DU 145 cells, Jurkat cells, mouse brain tissue, mouse liver tissue. Observed molecular weight by Western-blot: 47 kDa

Preparation

This antibody was obtained by immunization of IDH2 recombinant protein (Accession Number: NM_002168). Purification method: Antigen affinity purified.

Formulation

PBS with 0.02% sodium azide and 50% glycerol pH 7.3.

Storage

Store at -20°C. DO NOT ALIQUOT

Clonality

Polyclonal

Ig Type

Rabbit IgG

Applications

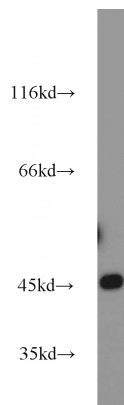
ELISA, WB, IHC, IF

Dilutions

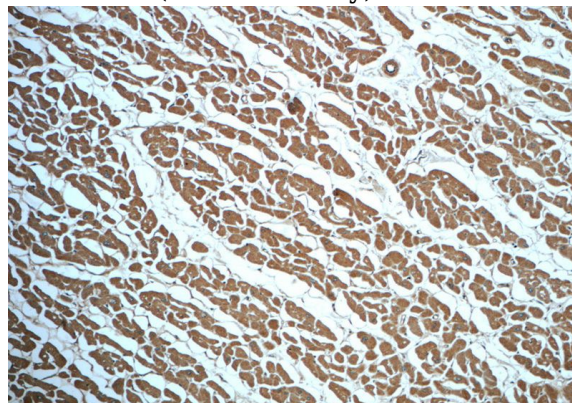
Recommended Dilution:

WB: 1:500-1:5000

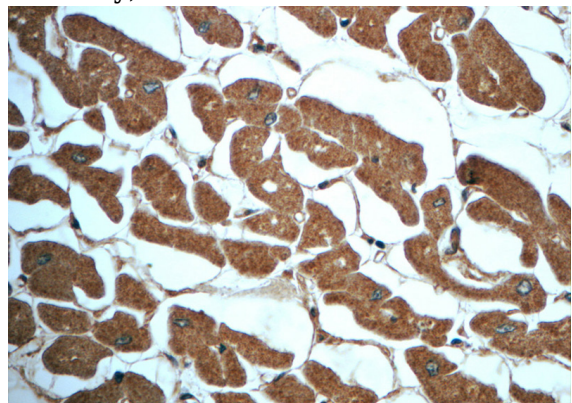
Validations



HEK-293 cells were subjected to SDS PAGE followed by western blot with Catalog No:111603(IDH2 antibody) at dilution of 1:1000



Immunohistochemistry of paraffin-embedded human heart slide using Catalog No:111603(IDH2 Antibody) at dilution of 1:50



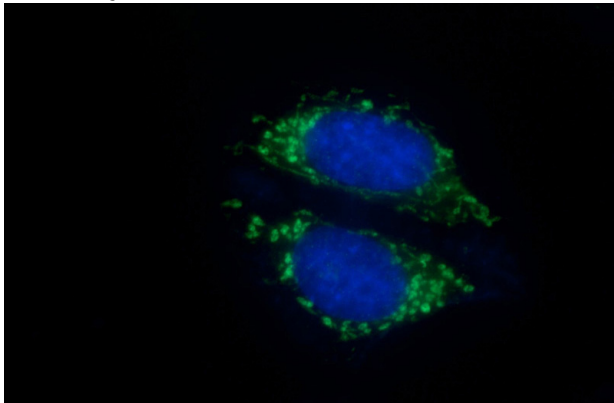
Immunohistochemistry of paraffin-embedded human heart slide using Catalog No:111603(IDH2

IDH2 antibody



Catalog Number: 111603

Antibody) at dilution of 1:50



Immunofluorescent analysis of (10% Formaldehyde) fixed HepG2 cells using Catalog No:111603(IDH2 Antibody) at dilution of 1:50 and Alexa Fluor 488-conjugated AffiniPure Goat Anti-Rabbit IgG(H+L)