

ICAM-1 antibody

Catalog Number: 111587

Product name

ICAM-1 antibody

WB: 1:200-1:2000

IP: 1:500-1:5000

Specificity

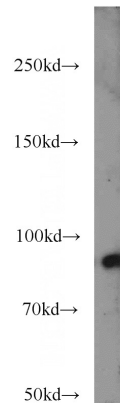
Human, Mouse; other species not tested.

IHC: 1:20-1:200

Antibody description

ICAM-1 Rabbit Polyclonal antibody. Positive WB detected in L02 cells, mouse liver tissue, Raji cells. Positive IP detected in Raji cells. Positive IHC detected in human lung cancer tissue, human liver cancer tissue, human tonsillitis tissue. Positive FC detected in Raji cells. Observed molecular weight by Western-blot: 85-95 kDa

Validations



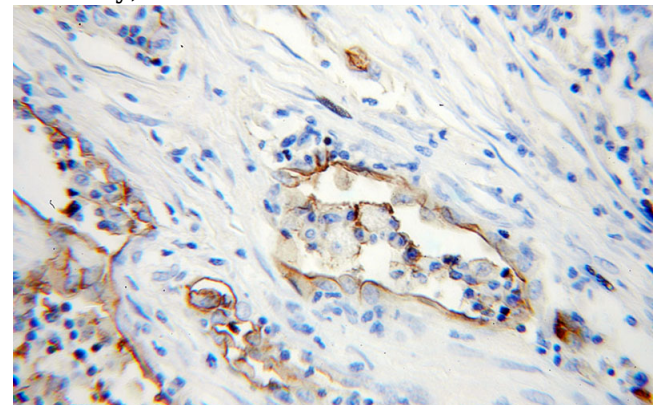
Preparation

This antibody was obtained by immunization of ICAM-1 recombinant protein (Accession Number: NM_000201). Purification method: Antigen affinity purified.

L02 cells were subjected to SDS PAGE followed by western blot with Catalog No:111587(ICAM-1 antibody) at dilution of 1:800

Formulation

PBS with 0.1% sodium azide and 50% glycerol pH 7.3.



Storage

Store at -20°C. DO NOT ALIQUOT

Immunohistochemical of paraffin-embedded human lung cancer using Catalog No:111587(ICAM-1 antibody) at dilution of 1:50 (under 25x lens)

Clonality

Polyclonal

Ig Type

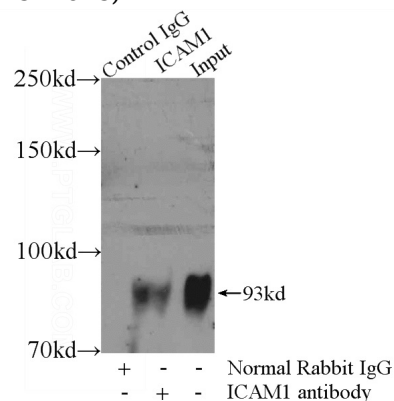
Rabbit IgG

Applications

ELISA, WB, IHC, IP, FC

Dilutions

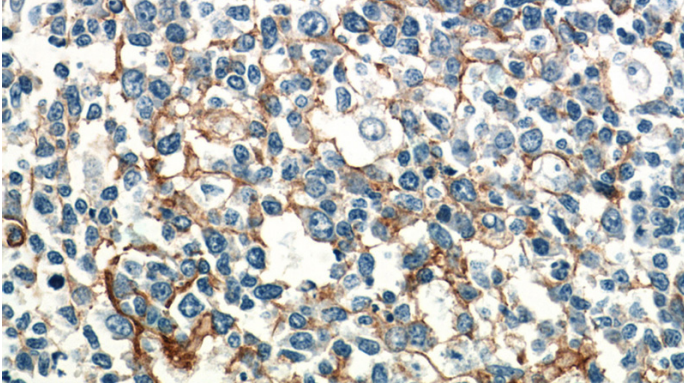
Recommended Dilution:



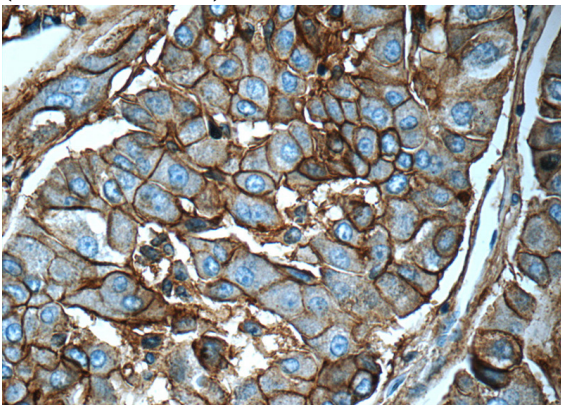
ICAM-1 antibody

Catalog Number: 111587

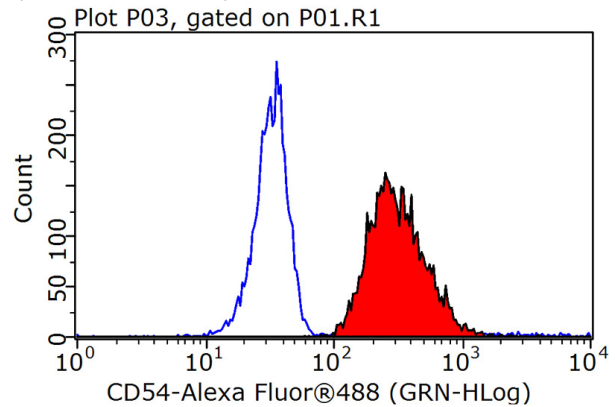
IP Result of anti-ICAM-1 (IP:Catalog No:111587, 4ug; Detection:Catalog No:111587 1:1000) with Raji cells lysate 1320ug.



Immunohistochemistry of paraffin-embedded human tonsillitis tissue slide using Catalog No:111587(ICAM-1 Antibody) at dilution of 1:50 (under 40x lens)



Immunohistochemistry of paraffin-embedded human liver cancer tissue slide using Catalog No:111587(ICAM-1 Antibody) at dilution of 1:50 (under 40x lens)



1X10⁶ Raji cells were stained with 0.2ug ICAM-1 antibody (Catalog No:111587, red) and control antibody (blue). Fixed with 90% MeOH blocked with 3% BSA (30 min). Alexa Fluor 488-conjugated AffiniPure Goat Anti-Rabbit IgG(H+L) with dilution 1:1000.