

# HSD17B2 antibody



Catalog Number: 111546

## Product name

HSD17B2 antibody

IHC: 1:20-1:200

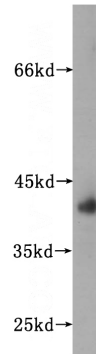
## Specificity

Human; other species not tested.

## Validations

## Antibody description

HSD17B2 Rabbit Polyclonal antibody. Positive IHC detected in human ovary tumor tissue. Positive WB detected in human liver tissue, MCF7 cells. Observed molecular weight by Western-blot: 35-40 kDa



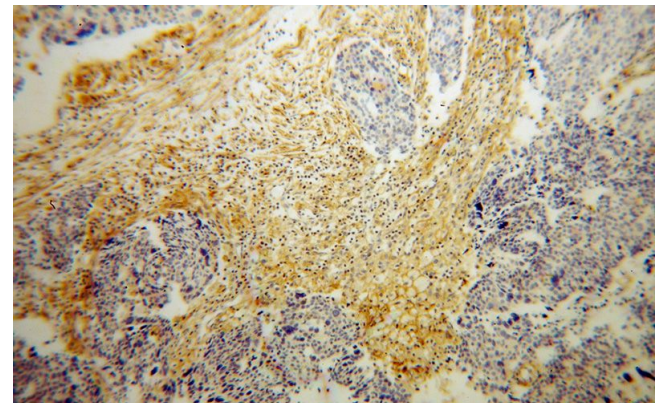
## Preparation

This antibody was obtained by immunization of HSD17B2 recombinant protein (Accession Number: NM\_002153). Purification method: Antigen affinity purified.

human liver tissue were subjected to SDS PAGE followed by western blot with Catalog No:111546(HSD17B2 antibody) at dilution of 1:400

## Formulation

PBS with 0.1% sodium azide and 50% glycerol pH 7.3.



## Storage

Store at -20°C. DO NOT ALIQUOT

## Clonality

Polyclonal

Immunohistochemical of paraffin-embedded human ovary tumor using Catalog No:111546(HSD17B2 antibody) at dilution of 1:100 (under 10x lens)

## Ig Type

Rabbit IgG

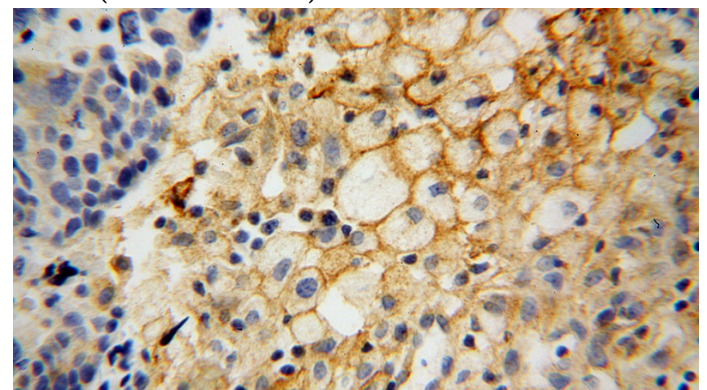
## Applications

ELISA, WB, IHC

## Dilutions

Recommended Dilution:

WB: 1:200-1:2000



Immunohistochemical of paraffin-embedded human ovary tumor using Catalog

# HSD17B2 antibody



Catalog Number: 111546

---

No:111546(HSD17B2 antibody) at dilution of 1:100 (under 40x lens)