

HRPT2 antibody

Catalog Number: 111466

Product name

HRPT2 antibody

WB: 1:200-1:2000

IP: 1:200-1:2000

Specificity

Human, Mouse, Rat; other species not tested.

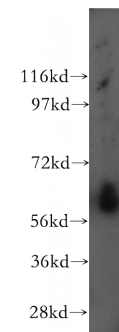
IHC: 1:20-1:200

IF: 1:20-1:200

Antibody description

HRPT2 Rabbit Polyclonal antibody. Positive IHC detected in human breast cancer tissue. Positive IF detected in Hela cells. Positive IP detected in mouse testis tissue. Positive WB detected in human lung tissue, human heart tissue, mouse testis tissue. Observed molecular weight by Western-blot: 61 kDa

Validations



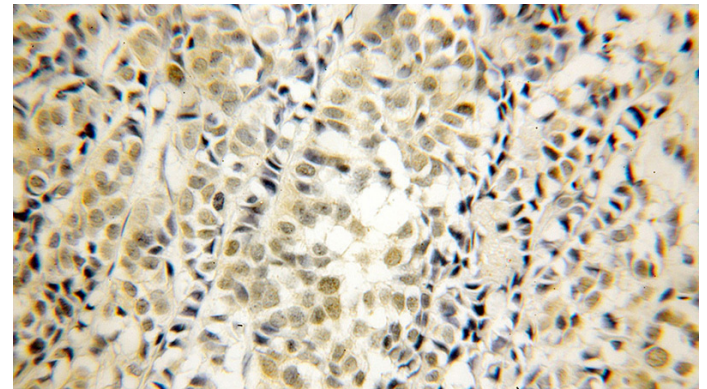
Preparation

This antibody was obtained by immunization of HRPT2 recombinant protein (Accession Number: BC014351). Purification method: Antigen affinity purified.

human lung tissue were subjected to SDS PAGE followed by western blot with Catalog No:111466(HRPT2; CDC73 antibody) at dilution of 1:500

Formulation

PBS with 0.1% sodium azide and 50% glycerol pH 7.3.



Storage

Store at -20°C. DO NOT ALIQUOT

Clonality

Polyclonal

Ig Type

Rabbit IgG

Immunohistochemical of paraffin-embedded human breast cancer using Catalog No:111466(HRPT2; CDC73 antibody) at dilution of 1:50 (under 10x lens)

Applications

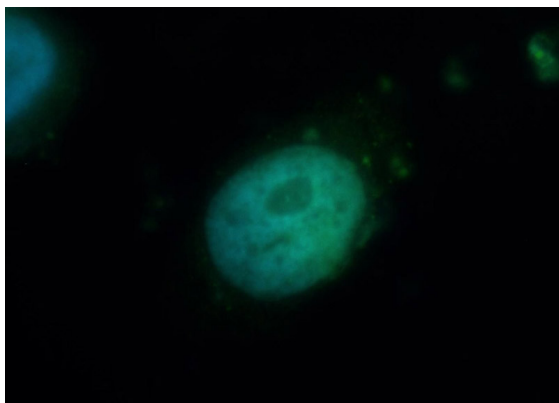
ELISA, WB, IHC, IF, IP

Dilutions

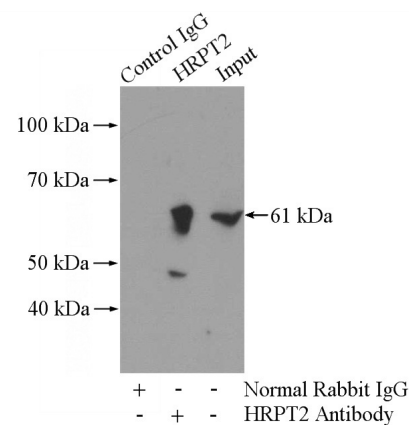
Recommended Dilution:

HRPT2 antibody

Catalog Number: 111466



Immunofluorescent analysis of HeLa cells, using CDC73 antibody Catalog No:111466 at 1:50 dilution and FITC-labeled donkey anti-rabbit IgG (green). Blue pseudocolor = DAPI (fluorescent



DNA dye).

IP Result of anti-HRPT2; CDC73 (IP:Catalog No:111466, 4ug; Detection:Catalog No:111466 1:500) with mouse testis tissue lysate 4000ug.