

HPSE antibody



Catalog Number: 111456

Product name

HPSE antibody

IHC: 1:20-1:200

IF: 1:10-1:100

Specificity

Human, Mouse; other species not tested.

Antibody description

HPSE Rabbit Polyclonal antibody. Positive IF detected in HeLa cells, HepG2 cells. Positive IHC detected in human liver cancer tissue, human placenta tissue. Positive WB detected in Jurkat cells. Observed molecular weight by Western-blot: 60 kDa

Preparation

This antibody was obtained by immunization of HPSE recombinant protein (Accession Number: NM_001098540). Purification method: Antigen affinity purified.

Formulation

PBS with 0.1% sodium azide and 50% glycerol pH 7.3.

Storage

Store at -20°C. DO NOT ALIQUOT

Clonality

Polyclonal

Ig Type

Rabbit IgG

Applications

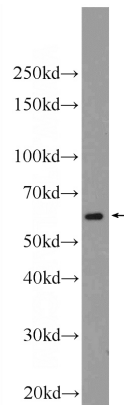
ELISA, WB, IHC, IF

Dilutions

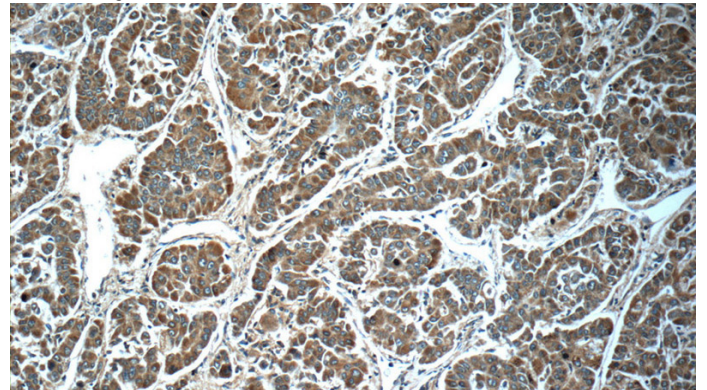
Recommended Dilution:

WB: 1:500-1:5000

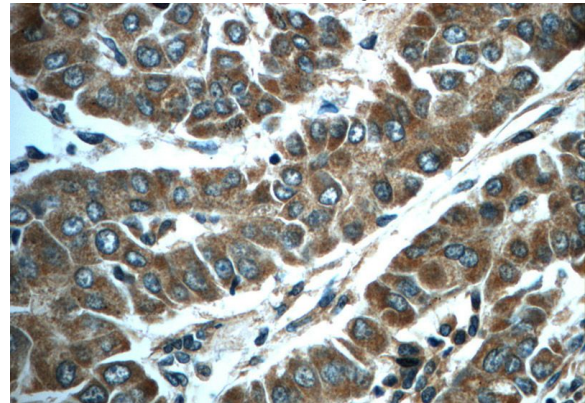
Validations



Jurkat cells were subjected to SDS PAGE followed by western blot with Catalog No:111456(HPSE Antibody) at dilution of 1:1000



Immunohistochemistry of paraffin-embedded human liver cancer slide using Catalog No:111456(HPSE Antibody) at dilution of 1:50

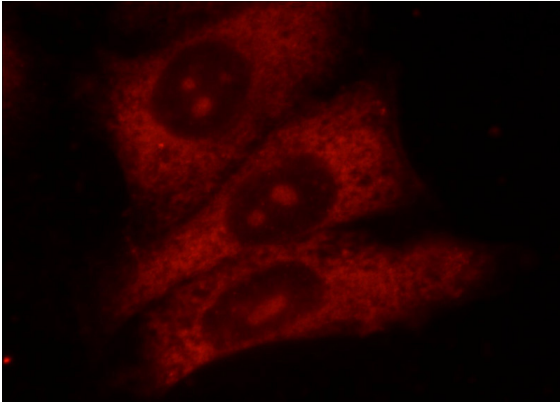


Immunohistochemistry of paraffin-embedded human liver cancer slide using Catalog

HPSE antibody

Catalog Number: 111456

No:111456(HPSE Antibody) at dilution of 1:50



Immunofluorescent analysis of HeLa cells using Catalog No:111456(HPSE Antibody) at dilution of 1:25 and Rhodamine-Goat anti-Rabbit IgG