

HPS4 antibody

Catalog Number: 111453

Product name

HPS4 antibody

IP: 1:200-1:2000

IHC: 1:20-1:200

Specificity

Human; other species not tested.

IF: 1:10-1:100

Antibody description

HPS4 Rabbit Polyclonal antibody. Positive IHC detected in human liver tissue. Positive IF detected in HepG2 cells. Positive IP detected in HeLa cells. Positive WB detected in A375 cells, HeLa cells, K-562 cells. Observed molecular weight by Western-blot: 70 kDa and 90 kDa

Preparation

This antibody was obtained by immunization of HPS4 recombinant protein (Accession Number: XM_017029044). Purification method: Antigen affinity purified.

Formulation

PBS with 0.1% sodium azide and 50% glycerol pH 7.3.

Storage

Store at -20°C. DO NOT ALIQUOT

Clonality

Polyclonal

Ig Type

Rabbit IgG

Applications

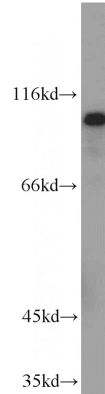
ELISA, WB, IF, IP, IHC

Dilutions

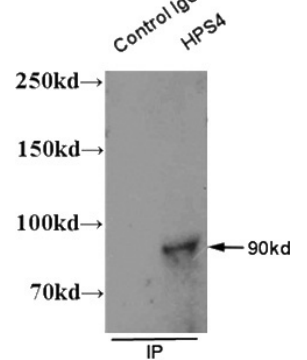
Recommended Dilution:

WB: 1:200-1:1000

Validations



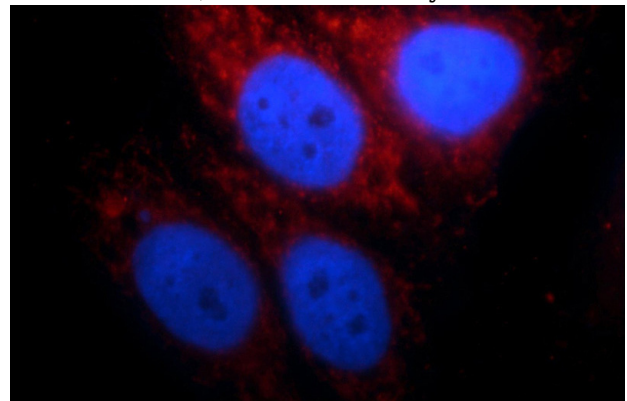
A375 cells were subjected to SDS PAGE followed by western blot with Catalog No:111453(HPS4



antibody) at dilution of 1:200

IP
Hela cell lysate-whole

IP result of anti-HPS4 (Catalog No:111959 for IP and Detection) with HeLa cell lysate.

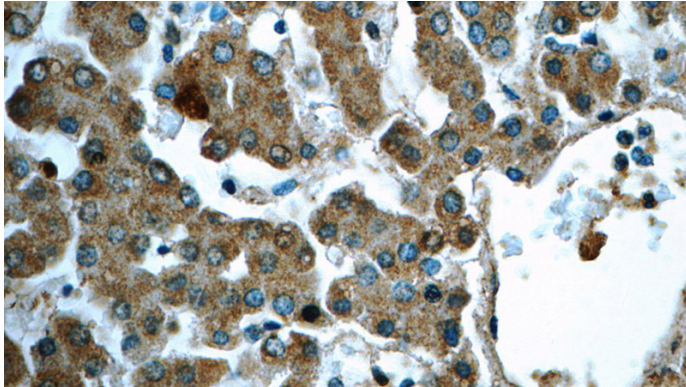


Immunofluorescent analysis of HepG2 cells, using HPS4 antibody Catalog No:111453 at 1:25 dilution

HPS4 antibody

Catalog Number: 111453

and Rhodamine-labeled goat anti-rabbit IgG (red).
Blue pseudocolor = DAPI (fluorescent DNA dye).



Immunohistochemistry of paraffin-embedded
human liver tissue slide using Catalog
No:111453(HPS4 Antibody) at dilution of 1:50