

HPDL antibody

Catalog Number: 111447

Product name

HPDL antibody

IHC: 1:20-1:200

IF: 1:10-1:100

Specificity

human; other species not tested.

Antibody description

HPDL Rabbit Polyclonal antibody. Positive IF detected in HepG2. Positive IHC detected in human stomach. Positive WB detected in L02 cells. Observed molecular weight by Western-blot: 35-39kd

Preparation

This antibody was obtained by immunization of HPDL recombinant protein (Accession Number: NM_032756). Purification method: Antigen affinity purified.

Formulation

PBS with 0.02% sodium azide and 50% glycerol pH 7.3.

Storage

Store at -20°C. DO NOT ALIQUOT

Clonality

Polyclonal

Ig Type

Rabbit IgG

Applications

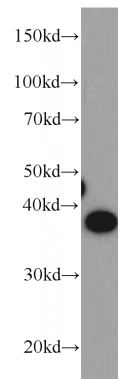
ELISA, WB, IHC, IF

Dilutions

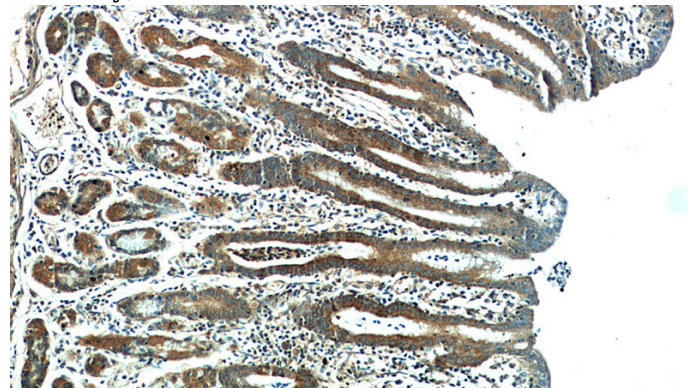
Recommended Dilution:

WB: 1:500-1:5000

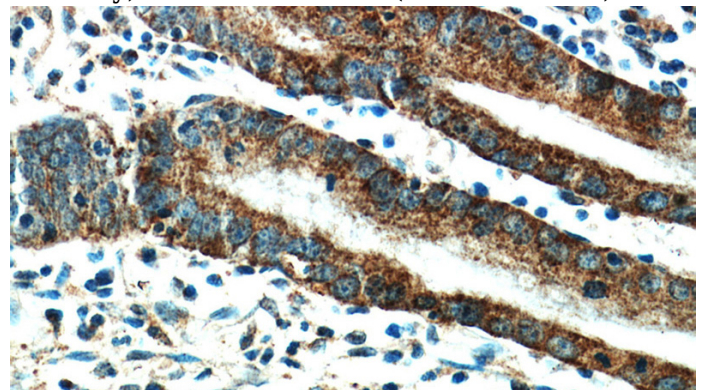
Validations



L02 cells were subjected to SDS PAGE followed by western blot with Catalog No:111447(HPDL antibody) at dilution of 1:500



Immunohistochemical of paraffin-embedded human stomach using Catalog No:111447(HPDL antibody) at dilution of 1:50 (under 10x lens)

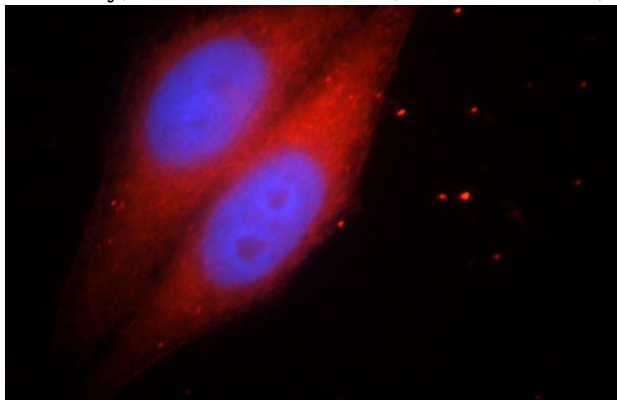


Immunohistochemical of paraffin-embedded human stomach using Catalog No:111447(HPDL antibody) at dilution of 1:50 (under 10x lens)

HPDL antibody

Catalog Number: 111447

antibody) at dilution of 1:50 (under 40x lens)



Immunofluorescent analysis of HepG2 cells, using HPDL antibody Catalog No:111447 at 1:25 dilution and Rhodamine-labeled goat anti-rabbit IgG (red). Blue pseudocolor = DAPI (fluorescent DNA dye).