

HPD antibody



Catalog Number: 111446

Product name

HPD antibody

IHC: 1:20-1:200

IF: 1:20-1:200

Specificity

Human, Mouse, Rat; other species not tested.

Antibody description

HPD Rabbit Polyclonal antibody. Positive IHC detected in human liver tissue. Positive IF detected in HepG2 cells. Positive WB detected in HepG2 cells, human liver tissue, Jurkat cells, rat liver tissue. Observed molecular weight by Western-blot: 40-45 kDa

Preparation

This antibody was obtained by immunization of HPD recombinant protein (Accession Number: NM_002150). Purification method: Antigen affinity purified.

Formulation

PBS with 0.02% sodium azide and 50% glycerol pH 7.3.

Storage

Store at -20°C. DO NOT ALIQUOT

Clonality

Polyclonal

Ig Type

Rabbit IgG

Applications

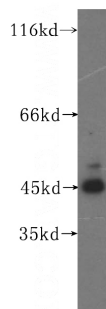
ELISA, WB, IHC, IF

Dilutions

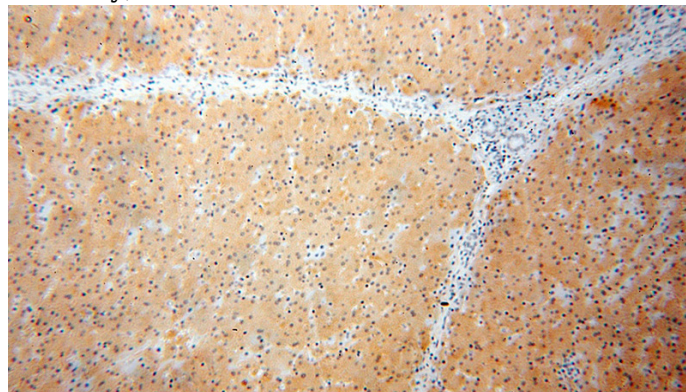
Recommended Dilution:

WB: 1:500-1:5000

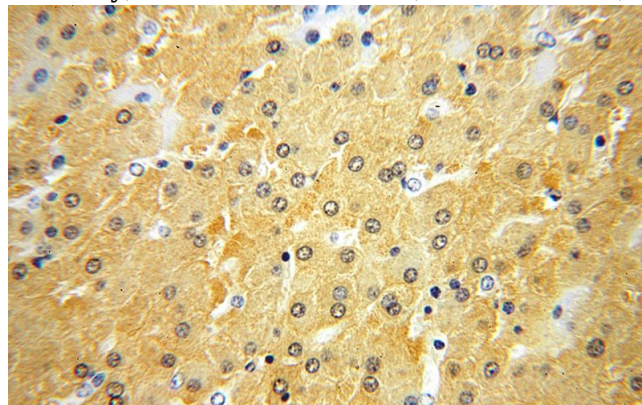
Validations



HepG2 cells were subjected to SDS PAGE followed by western blot with Catalog No:111446(HPD antibody) at dilution of 1:300



Immunohistochemical of paraffin-embedded human liver using Catalog No:111446(HPD antibody) at dilution of 1:100 (under 10x lens)



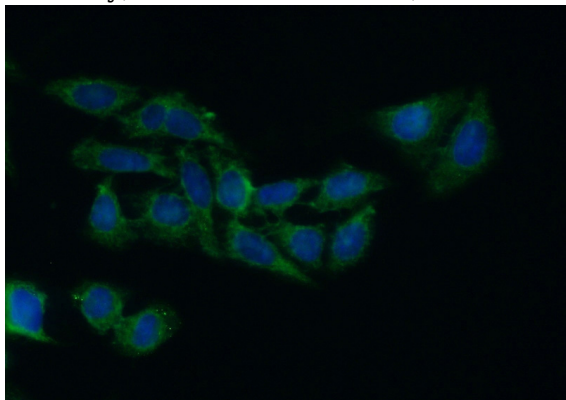
Immunohistochemical of paraffin-embedded human liver using Catalog No:111446(HPD

HPD antibody



Catalog Number: 111446

antibody) at dilution of 1:100 (under 40x lens)



Immunofluorescent analysis of (10% Formaldehyde) fixed HepG2 cells using Catalog No:111446(HPD Antibody) at dilution of 1:50 and Alexa Fluor 488-conjugated AffiniPure Goat Anti-Rabbit IgG(H+L)