

# HLA class I (HLA-C) antibody



Catalog Number: 111416

## Product name

HLA class I (HLA-C) antibody

## Immunogen

[Human HLA class I \(HLA-C\) Recombinant protein \(GST tag\)](#)

## Specificity

Human; other species not tested.

## Antibody description

HLA class I (HLA-C) Rabbit Polyclonal antibody. Positive IP detected in Jurkat cells. Positive WB detected in Jurkat cells, HL-60 cells. Positive IHC detected in human lymphoma tissue. Positive IF detected in HeLa cells. Observed molecular weight by Western-blot: 44 kDa

## Preparation

This antibody was obtained by immunization of HLA class I (HLA-C) recombinant protein (Accession Number: NM\_002117). Purification method: Antigen affinity purified.

## Formulation

PBS with 0.02% sodium azide and 50% glycerol pH 7.3.

## Storage

Store at -20°C. DO NOT ALIQUOT

## Clonality

Polyclonal

## Ig Type

Rabbit IgG

## Applications

ELISA, IHC, IP, WB, IF

## Dilutions

Recommended Dilution:

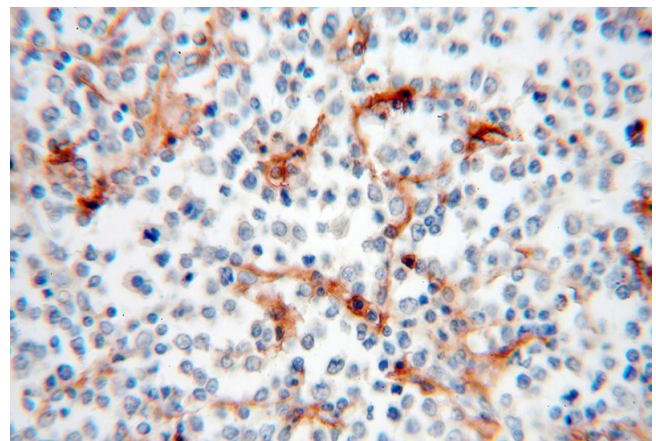
WB: 1:500-1:5000

IP: 1:500-1:5000

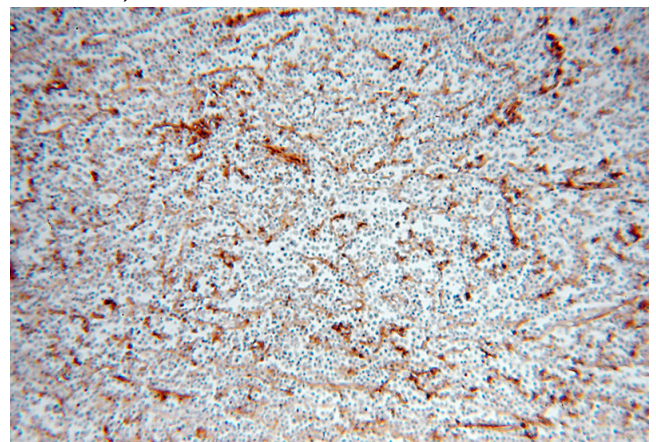
IHC: 1:20-1:200

IF: 1:50-1:500

## Validations



Immunohistochemical of paraffin-embedded human lymphoma using Catalog No:111416(HLA class I (HLA-C) antibody) at dilution of 1:50 (under 40x lens)

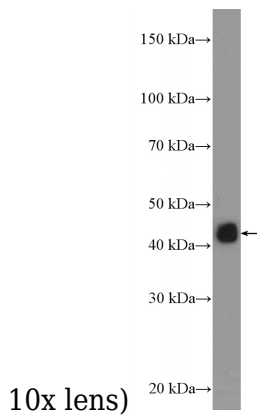


Immunohistochemical of paraffin-embedded human lymphoma using Catalog No:111416(HLA class I (HLA-C) antibody) at dilution of 1:50 (under

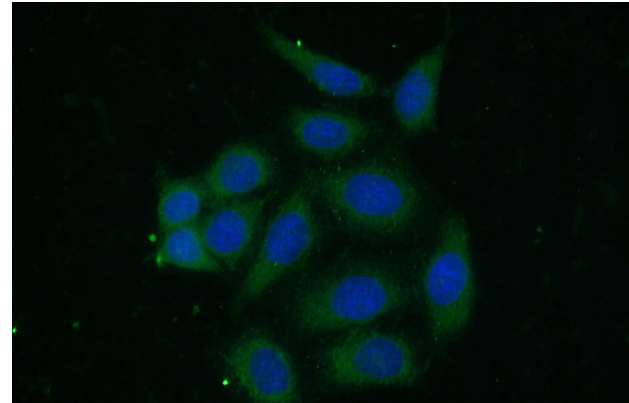
# HLA class I (HLA-C) antibody



Catalog Number: 111416



IP Result of anti-HLA class I (HLA-C) (IP:Catalog No:111416, 4ug; Detection:Catalog No:111416 1:1000) with Jurkat cells lysate 2400ug.



Immunofluorescent analysis of (-20oc Ethanol) fixed HeLa cells using Catalog No:111416(HLA class I (HLA-C) Antibody) at dilution of 1:50 and Alexa Fluor 488-conjugated AffiniPure Goat Anti-Rabbit IgG(H+L)

Jurkat cells were subjected to SDS PAGE followed by western blot with Catalog No:111416(HLA class I (HLA-C) Antibody) at dilution of 1:1000

