

# Histone H4 antibody



Catalog Number: 111408

## Product name

Histone H4 antibody

## Specificity

Human, Mouse, Rat; other species not tested.

## Antibody description

Histone H4 Rabbit Polyclonal antibody. Positive IF detected in HeLa cells. Positive IHC detected in human breast cancer tissue. Positive WB detected in mouse thymus tissue, HeLa cells, HepG2 cells, HT-1080 cells, MCF7 cells, mouse kidney tissue, rat thymus tissue. Positive IP detected in HeLa cells. Observed molecular weight by Western-blot: 14 kDa and 11 kDa

## Preparation

This antibody was obtained by immunization of Histone H4 recombinant protein (Accession Number: BC012587). Purification method: Antigen affinity purified.

## Formulation

PBS with 0.02% sodium azide and 50% glycerol pH 7.3.

## Storage

Store at -20°C. DO NOT ALIQUOT

## Clonality

Polyclonal

## Ig Type

Rabbit IgG

## Applications

ELISA, IHC, WB, IP, IF

## Dilutions

Recommended Dilution:

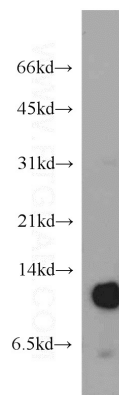
WB: 1:200-1:2000

IP: 1:200-1:2000

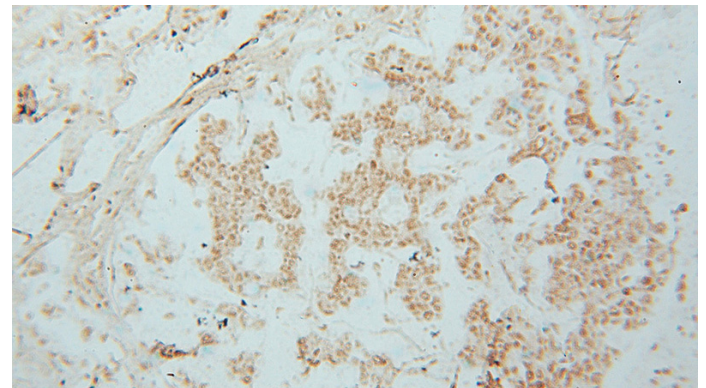
IHC: 1:20-1:200

IF: 1:20-1:200

## Validations



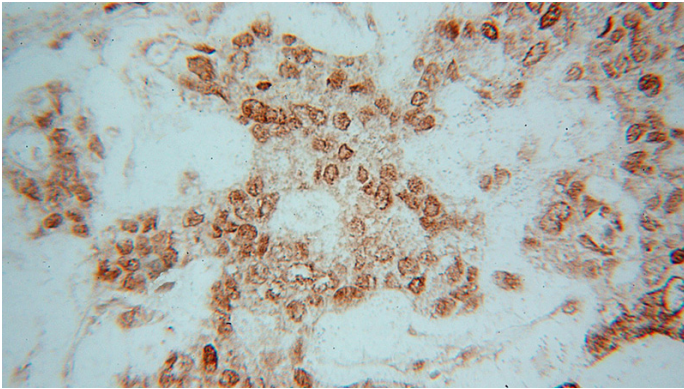
mouse thymus tissue were subjected to SDS PAGE followed by western blot with Catalog No:111408(HIST1H4E antibody) at dilution of 1:500



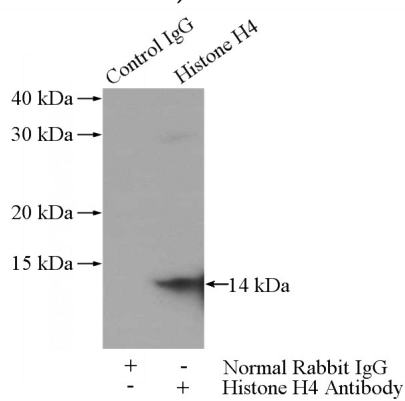
Immunohistochemical of paraffin-embedded human breast cancer using Catalog No:111408(HIST1H4E antibody) at dilution of 1:50 (under 10x lens)

# Histone H4 antibody

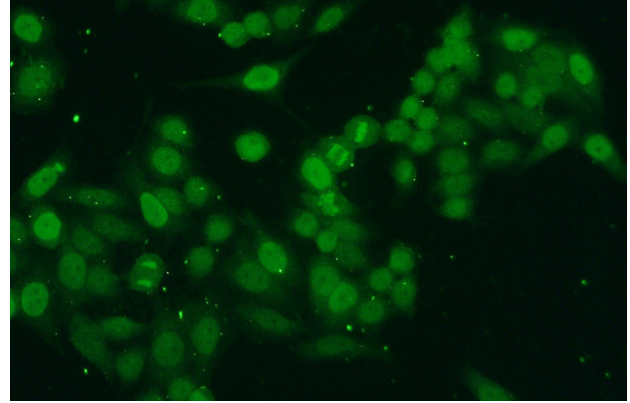
Catalog Number: 111408



Immunohistochemical of paraffin-embedded human breast cancer using Catalog No:111408(HIST1H4E antibody) at dilution of 1:50 (under 40x lens)



IP Result of anti-Histone H4 (IP:Catalog No:111408, 3ug; Detection:Catalog No:111408 1:600) with HeLa cells lysate 2000ug.



Immunofluorescent analysis of HeLa cells using Catalog No:111408(Histone H4 Antibody) at dilution of 1:50 and Alexa Fluor 488-conjugated AffiniPure Goat Anti-Rabbit IgG(H+L)