

# hD53; TPD52L1 antibody



Catalog Number: 111369

## Product name

hD53; TPD52L1 antibody

IP: 1:200-1:1000

IHC: 1:20-1:200

## Specificity

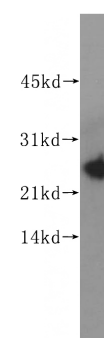
Human; other species not tested.

IF: 1:20-1:200

## Validations

## Antibody description

hD53; TPD52L1 Rabbit Polyclonal antibody. Positive IHC detected in human prostate tissue. Positive IF detected in MCF-7 cells. Positive WB detected in MCF7 cells. Positive IP detected in MCF-7 cells. Observed molecular weight by Western-blot: 25 kDa



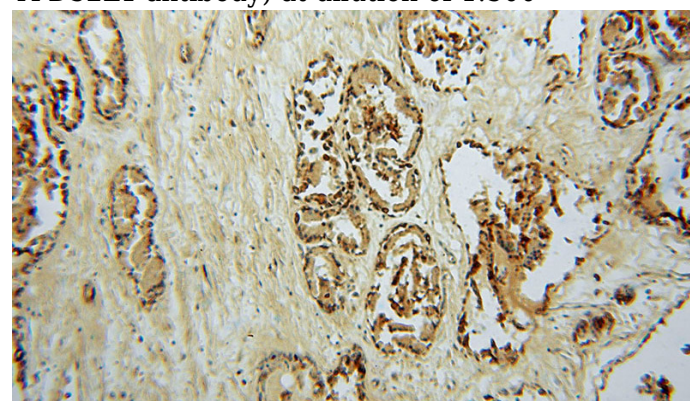
## Preparation

This antibody was obtained by immunization of hD53; TPD52L1 recombinant protein (Accession Number: NM\_001003396). Purification method: Antigen affinity purified.

MCF7 cells were subjected to SDS PAGE followed by western blot with Catalog No:111369(hD53; TPD52L1 antibody) at dilution of 1:500

## Formulation

PBS with 0.02% sodium azide and 50% glycerol pH 7.3.



## Storage

Store at -20°C. DO NOT ALIQUOT

## Clonality

Polyclonal

## Ig Type

Rabbit IgG

## Applications

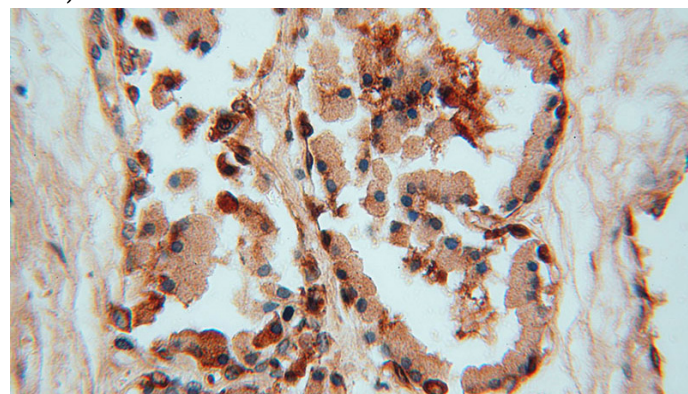
ELISA, IHC, WB, IP, IF

## Dilutions

Recommended Dilution:

WB: 1:200-1:2000

Immunohistochemical of paraffin-embedded human prostate using Catalog No:111369(hD53; TPD52L1 antibody) at dilution of 1:50 (under 10x lens)

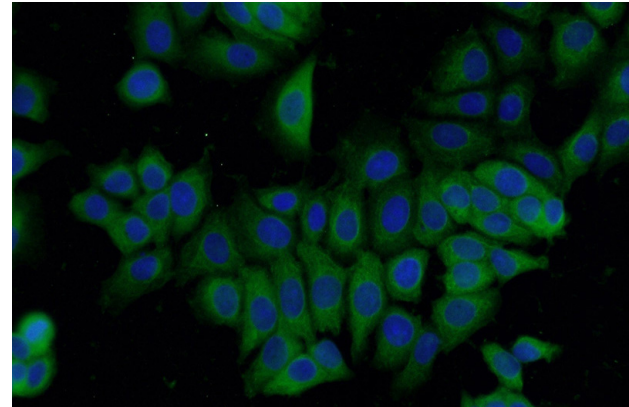


# hD53; TPD52L1 antibody

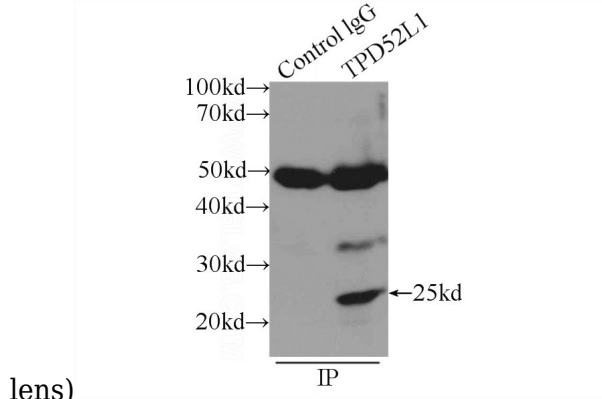
Catalog Number: 111369

Immunohistochemical of paraffin-embedded human prostate using Catalog No:111369(hD53; TPD52L1 antibody) at dilution of 1:50 (under 40x

1:300) with MCF-7 cells lysate 2500ug.



Immunofluorescent analysis of MCF-7 cells using Catalog No:111369(hD53; TPD52L1 Antibody) at dilution of 1:50 and Alexa Fluor 488-conjugated AffiniPure Goat Anti-Rabbit IgG(H+L)



lens)

IP Result of anti-hD53; TPD52L1 (IP:Catalog No:111369, 3ug; Detection:Catalog No:111369