

# HIRIP3 antibody



Catalog Number: 111356

## Product name

HIRIP3 antibody

## Specificity

Human, Mouse; other species not tested.

## Antibody description

HIRIP3 Rabbit Polyclonal antibody. Positive WB detected in mouse skeletal muscle tissue, human heart tissue, human skeletal muscle tissue. Positive IHC detected in human ovary tissue, human heart tissue, human kidney tissue, human placenta tissue, human skin tissue, human testis tissue. Observed molecular weight by Western-blot: 69kd

## Preparation

This antibody was obtained by immunization of HIRIP3 recombinant protein (Accession Number: NM\_003609). Purification method: Antigen affinity purified.

## Formulation

PBS with 0.02% sodium azide and 50% glycerol pH 7.3.

## Storage

Store at -20°C. DO NOT ALIQUOT

## Clonality

Polyclonal

## Ig Type

Rabbit IgG

## Applications

ELISA, WB, IHC

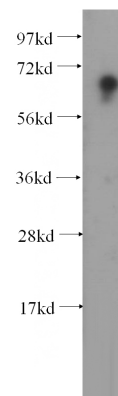
## Dilutions

Recommended Dilution:

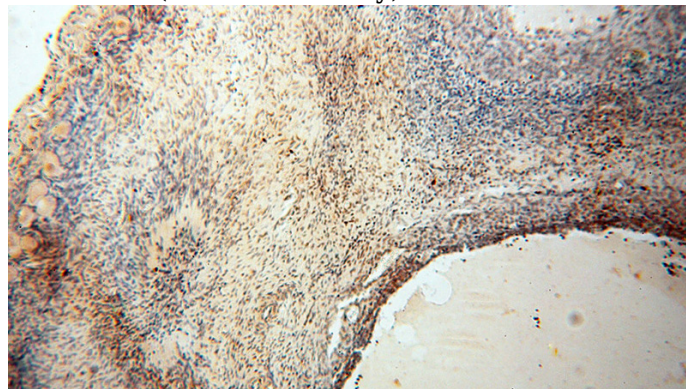
WB: 1:200-1:2000

IHC: 1:20-1:200

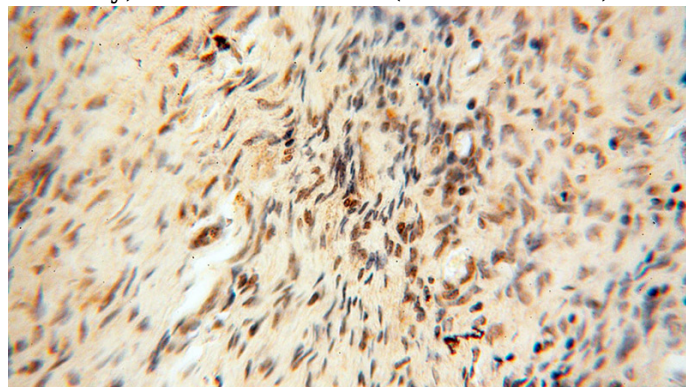
## Validations



mouse skeletal muscle tissue were subjected to SDS PAGE followed by western blot with Catalog No:111356(HIRIP3 antibody) at dilution of 1:300



Immunohistochemical of paraffin-embedded human ovary using Catalog No:111356(HIRIP3 antibody) at dilution of 1:50 (under 10x lens)



Immunohistochemical of paraffin-embedded

# HIRIP3 antibody



Catalog Number: 111356

---

human ovary using Catalog No:111356(HIRIP3 antibody) at dilution of 1:50 (under 40x lens)