

HIP1-Specific antibody

Catalog Number: 111355

Product name

HIP1-Specific antibody

IP: 1:500-1:5000

IHC: 1:20-1:200

Specificity

Human, Mouse, Rat; other species not tested.

Antibody description

HIP1-Specific Rabbit Polyclonal antibody. Positive WB detected in COLO 320 cells, HEK-293 cells, mouse colon tissue. Positive IP detected in HEK-293 cells. Positive IHC detected in human brain tissue, human colon cancer tissue, human prostate cancer tissue. Observed molecular weight by Western-blot: 116 kDa

Preparation

This antibody was obtained by immunization of Peptide (Accession Number: NM_005338). Purification method: Antigen affinity purified.

Formulation

PBS with 0.02% sodium azide and 50% glycerol pH 7.3.

Storage

Store at -20°C. DO NOT ALIQUOT

Clonality

Polyclonal

Ig Type

Rabbit IgG

Applications

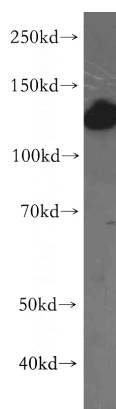
ELISA, WB, IHC, IP

Dilutions

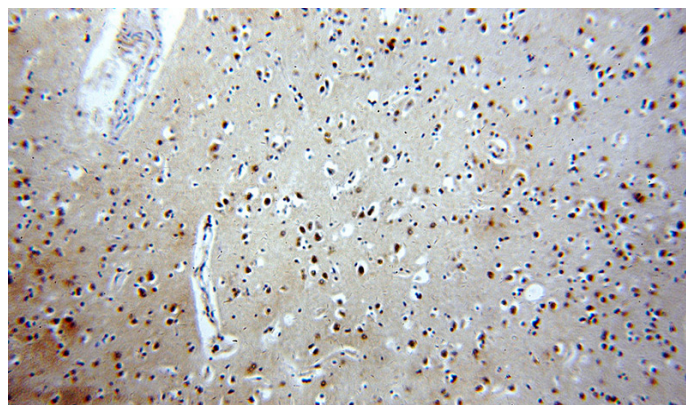
Recommended Dilution:

WB: 1:500-1:5000

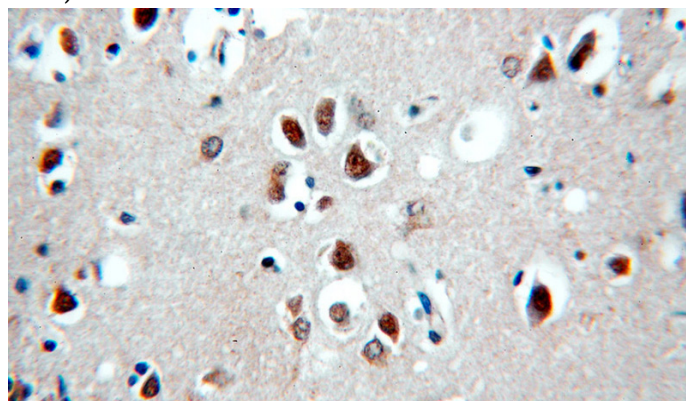
Validations



COLO 320 cells were subjected to SDS PAGE followed by western blot with Catalog No:111355(HIP1-Specific antibody) at dilution of 1:300



Immunohistochemical of paraffin-embedded human brain using Catalog No:111355(HIP1-Specific antibody) at dilution of 1:100 (under 10x lens)



HIP1-Specific antibody

Catalog Number: 111355

Immunohistochemical of paraffin-embedded human brain using Catalog No:111355(HIP1-Specific antibody) at dilution of 1:100 (under 40x

IP Result of anti-HIP1-Specific (IP:Catalog No:111355, 4ug; Detection:Catalog No:111355 1:1000) with HEK-293 cells lysate 2400ug.

