

# HIP1 antibody

Catalog Number: 111352

## Product name

HIP1 antibody

WB: 1:500-1:5000

IHC: 1:20-1:200

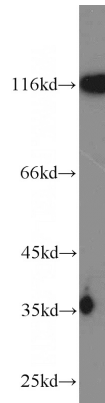
## Specificity

Human; other species not tested.

## Validations

## Antibody description

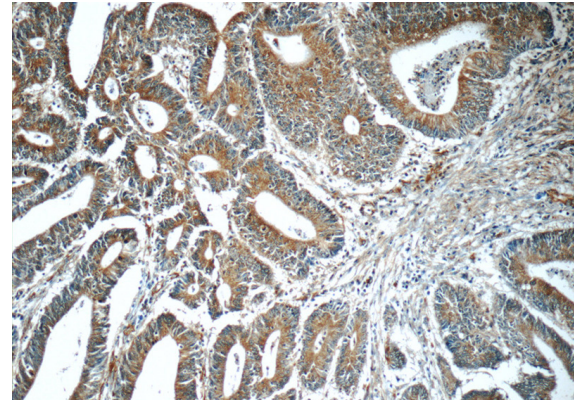
HIP1 Rabbit Polyclonal antibody. Positive IHC detected in human colon cancer tissue, human brain tissue, human prostate cancer tissue. Positive WB detected in DU 145 cells, A549 cells, HeLa cells, human brain tissue, PC-3 cells. Observed molecular weight by Western-blot: 116 kDa



## Preparation

This antibody was obtained by immunization of HIP1 recombinant protein (Accession Number: NM\_005338). Purification method: Antigen Affinity purified.

DU 145 cells were subjected to SDS PAGE followed by western blot with Catalog No:111352(HIP1 antibody) at dilution of 1:1000



## Formulation

PBS with 0.02% sodium azide and 50% glycerol pH 7.3.

## Storage

Store at -20°C. DO NOT ALIQUOT

## Clonality

Polyclonal

## Ig Type

Rabbit IgG

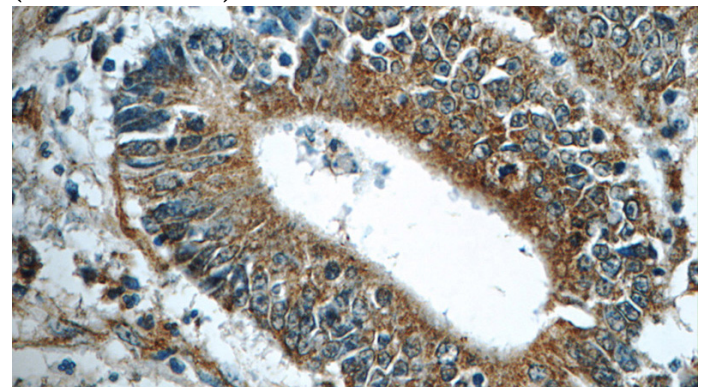
## Applications

ELISA, WB, IHC

## Dilutions

Recommended Dilution:

Immunohistochemistry of paraffin-embedded human colon cancer tissue slide using Catalog No:111352(HIP1 Antibody) at dilution of 1:50 (under 10x lens)



Immunohistochemistry of paraffin-embedded

# HIP1 antibody



Catalog Number: 111352

---

human colon cancer tissue slide using Catalog

No:111352(HIP1 Antibody) at dilution of 1:50  
(under 40x lens)