

HIF1a antibody

Catalog Number: 111345

Product name

HIF1a antibody

Immunogen

[Human HIF1a Recombinant protein \(GST tag\)](#)

Specificity

Human, Mouse, Rat; other species not tested.

Antibody description

HIF1a Rabbit Polyclonal antibody. Positive WB detected in Cobalt Chloride treated HeLa cells, HeLa cells, mouse small intestine tissue. Positive IF detected in HeLa cells. Positive IHC detected in human thyroid cancer tissue, human heart tissue, human kidney tissue. Positive FC detected in HeLa cells. Observed molecular weight by Western-blot: 120 kDa

Preparation

This antibody was obtained by immunization of HIF1a recombinant protein (Accession Number: NM_001530). Purification method: Antigen affinity purified.

Formulation

PBS with 0.02% sodium azide and 50% glycerol pH 7.3.

Storage

Store at -20°C. DO NOT ALIQUOT

Clonality

Polyclonal

Ig Type

Rabbit IgG

Applications

ELISA, IHC, IF, FC, WB

Dilutions

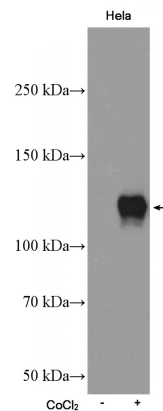
Recommended Dilution:

WB: 1:200-1:1000

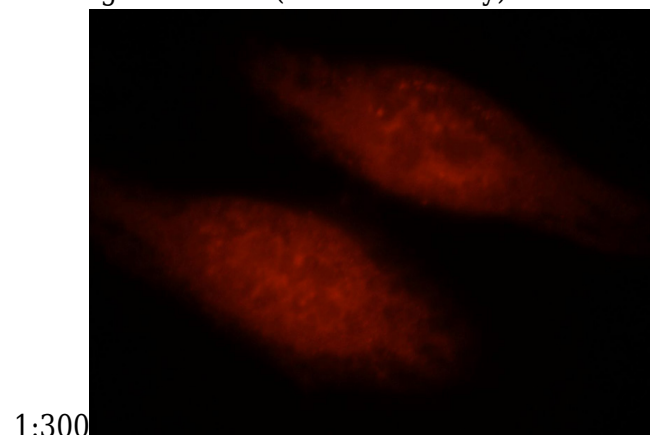
IHC: 1:20-1:200

IF: 1:10-1:100

Validations



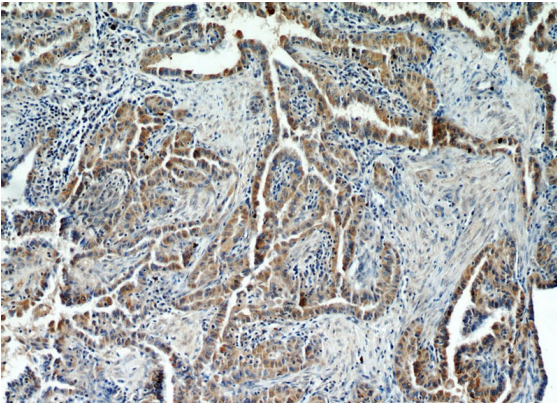
Cobalt Chloride treated HeLa cells were subjected to SDS PAGE followed by western blot with Catalog No:111345(HIF1a Antibody) at dilution of



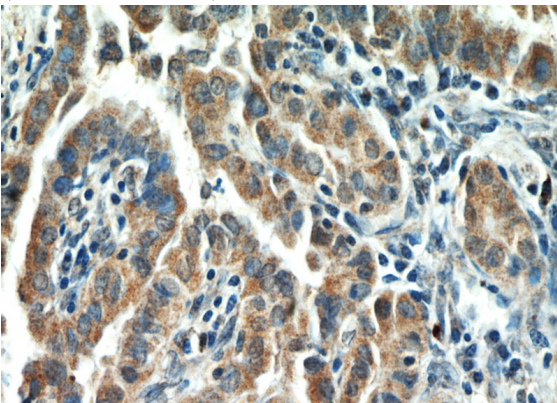
1:300 Immunofluorescent analysis of HeLa cells, using HIF1A antibody Catalog No:111345 at 1:25 dilution and Rhodamine-labeled goat anti-rabbit IgG (red).

HIF1a antibody

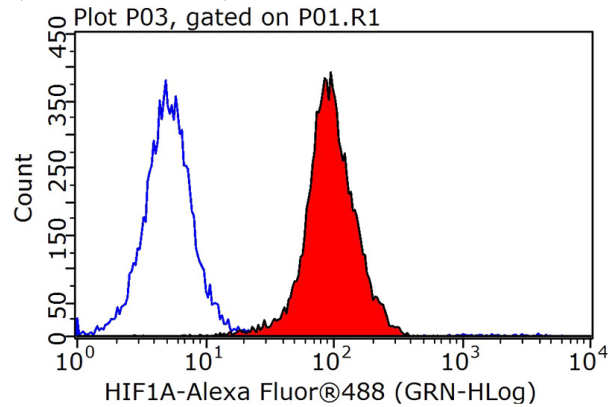
Catalog Number: 111345



Immunohistochemical of paraffin-embedded human thyroid cancer using Catalog No:111345(HIF1A antibody) at dilution of 1:50 (under 40x lens)



Immunohistochemical of paraffin-embedded human thyroid cancer using Catalog No:111345(HIF1A antibody) at dilution of 1:50 (under 40x lens)



1X10⁶ HeLa cells were stained with 0.2ug HIF1a antibody (Catalog No:111345, red) and control antibody (blue). Fixed with 90% MeOH blocked with 3% BSA (30 min). Alexa Fluor 488-conjugated AffiniPure Goat Anti-Rabbit IgG(H+L) with dilution 1:1000.