

# H2AFY2 antibody

Catalog Number: 111324

## Product name

H2AFY2 antibody

## Specificity

Human, Mouse, Rat; other species not tested.

## Antibody description

H2AFY2 Rabbit Polyclonal antibody. Positive IP detected in HepG2 cells. Positive WB detected in HepG2 cells, human liver tissue, mouse kidney tissue. Observed molecular weight by Western-blot: 40 kDa

## Preparation

This antibody was obtained by immunization of H2AFY2 recombinant protein (Accession Number: NM\_018649). Purification method: Antigen affinity purified.

## Formulation

PBS with 0.02% sodium azide and 50% glycerol pH 7.3.

## Storage

Store at -20°C. DO NOT ALIQUOT

## Clonality

Polyclonal

## Ig Type

Rabbit IgG

## Applications

ELISA, WB, IP

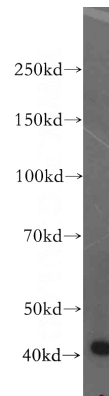
## Dilutions

Recommended Dilution:

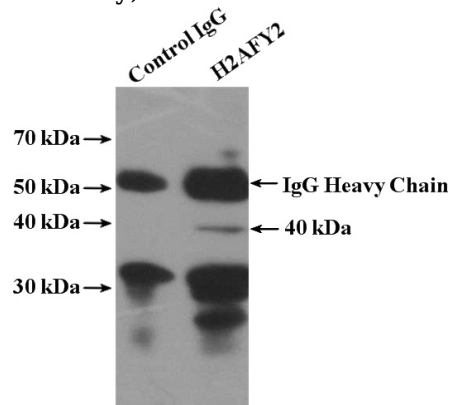
WB: 1:500-1:5000

IP: 1:200-1:2000

## Validations



HepG2 cells were subjected to SDS PAGE followed by western blot with Catalog No:111324(H2AFY2 antibody) at dilution of 1:500



IP Result of anti-Histone H2A.2 (IP:Catalog No:111324, 4ug; Detection:Catalog No:111324 1:500) with HepG2 cells lysate 1000ug.