

HAUS3 antibody

Catalog Number: 111261

Product name

HAUS3 antibody

IF: 1:20-1:200

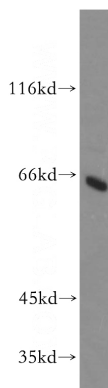
Specificity

Human, Mouse, Rat; other species not tested.

Antibody description

HAUS3 Rabbit Polyclonal antibody. Positive IF detected in HepG2 cells. Positive IHC detected in human liver cancer tissue. Positive WB detected in HepG2 cells, HeLa cells. Observed molecular weight by Western-blot: 62-65 kDa

Validations



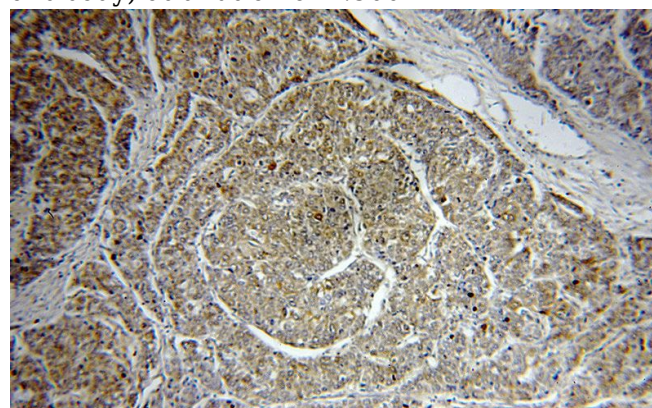
Preparation

This antibody was obtained by immunization of Peptide (Accession Number: NM_024511). Purification method: Antigen affinity purified.

HepG2 cells were subjected to SDS PAGE followed by western blot with Catalog No:111261(C4orf15 antibody) at dilution of 1:500

Formulation

PBS with 0.02% sodium azide and 50% glycerol pH 7.3.



Storage

Store at -20°C. DO NOT ALIQUOT

Clonality

Polyclonal

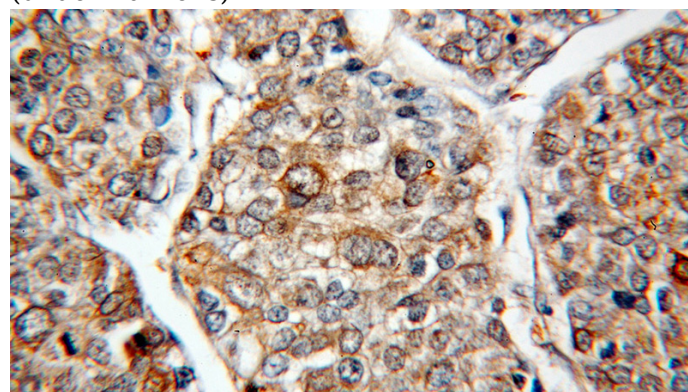
Immunohistochemical of paraffin-embedded human liver cancer using Catalog No:111261(C4orf15 antibody) at dilution of 1:100 (under 10x lens)

Ig Type

Rabbit IgG

Applications

ELISA, WB, IHC, IF



Dilutions

Recommended Dilution:

WB: 1:500-1:5000

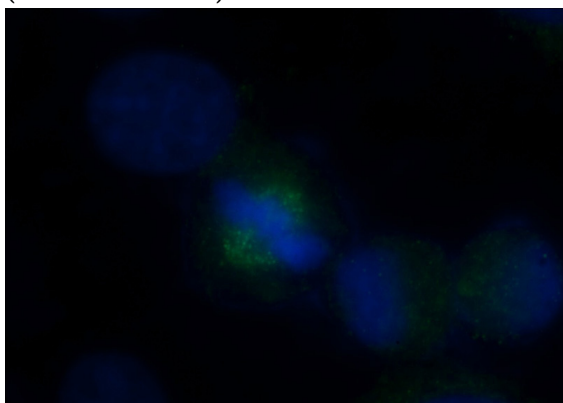
IHC: 1:20-1:200

Immunohistochemical of paraffin-embedded human liver cancer using Catalog No:111261(C4orf15 antibody) at dilution of 1:100

HAUS3 antibody

Catalog Number: 111261

(under 40x lens)



Immunofluorescent analysis of (-20oc Ethanol) fixed HepG2 cells using Catalog No:111261(C4orf15 Antibody) at dilution of 1:50 and Alexa Fluor 488-conjugated AffiniPure Goat Anti-Rabbit IgG(H+L)