

# GTF3C6 antibody

Catalog Number: 111240

## Product name

GTF3C6 antibody

## Immunogen

[Human GTF3C6 Recombinant protein \(His tag\)](#)

## Specificity

Human; other species not tested.

## Antibody description

GTF3C6 Rabbit Polyclonal antibody. Positive IP detected in HepG2 cells. Positive WB detected in HeLa cells, HepG2 cells, K-562 cells. Observed molecular weight by Western-blot: 35-38 kDa

## Preparation

This antibody was obtained by immunization of GTF3C6 recombinant protein (Accession Number: NM\_138408). Purification method: Antigen affinity purified.

## Formulation

PBS with 0.1% sodium azide and 50% glycerol pH 7.3.

## Storage

Store at -20°C. DO NOT ALIQUOT

## Clonality

Polyclonal

## Ig Type

Rabbit IgG

## Applications

ELISA, IP, WB

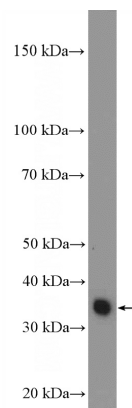
## Dilutions

Recommended Dilution:

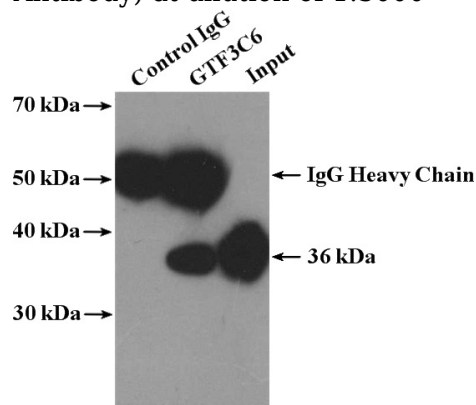
WB: 1:1000-1:10000

IP: 1:1000-1:10000

## Validations



HeLa cells were subjected to SDS PAGE followed by western blot with Catalog No:111240(GTF3C6 Antibody) at dilution of 1:3000



IP Result of anti-GTF3C6 (IP:Catalog No:111240, 4ug; Detection:Catalog No:111240 1:2000) with HepG2 cells lysate 3600ug.