

Product name

GTDC1 antibody

IHC: 1:20-1:200

IF: 1:10-1:100

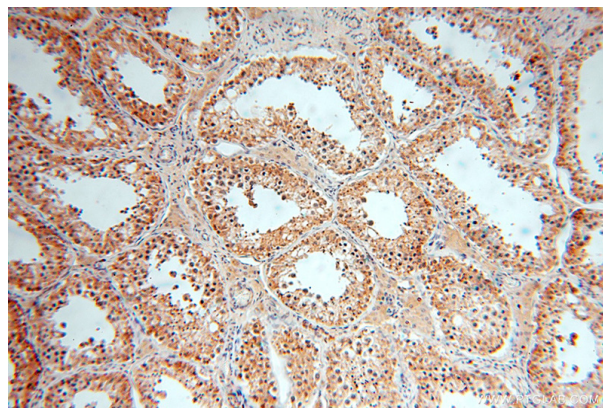
Specificity

Human, Mouse, Rat; other species not tested.

Validations

Antibody description

GTDC1 Rabbit Polyclonal antibody. Positive WB detected in Transfected HEK-293 cells. Positive IHC detected in human testis tissue, human kidney tissue, human liver tissue, human ovary tissue, human spleen tissue. Positive IF detected in HepG2 cells.



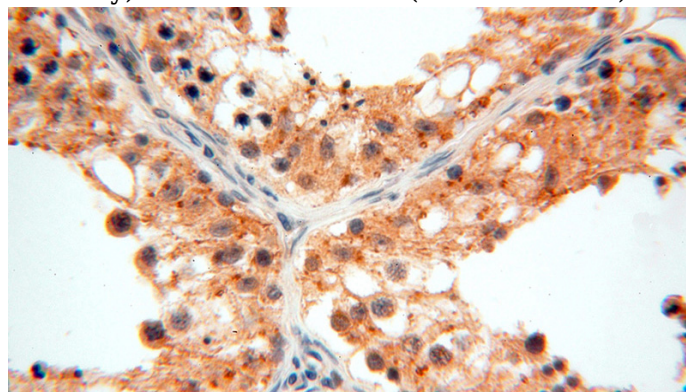
Preparation

This antibody was obtained by immunization of GTDC1 recombinant protein (Accession Number: NM_001284235). Purification method: Antigen affinity purified.

Immunohistochemical of paraffin-embedded human testis using Catalog No:111226(GTDC1 antibody) at dilution of 1:100 (under 10x lens)

Formulation

PBS with 0.02% sodium azide and 50% glycerol pH 7.3.



Storage

Store at -20°C. DO NOT ALIQUOT

Immunohistochemical of paraffin-embedded human testis using Catalog No:111226(GTDC1 antibody) at dilution of 1:100 (under 40x lens)

Clonality

Polyclonal

Ig Type

Rabbit IgG

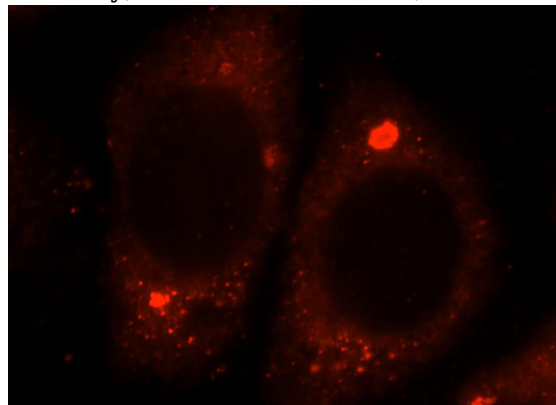
Applications

ELISA, IHC, IF, WB

Dilutions

Recommended Dilution:

WB: 1:200-1:2000



Immunofluorescent analysis of HepG2 cells, using UGT2B7 antibody Catalog No:111226 at 1:25

GTDC1 antibody

Catalog Number: 111226

dilution and Rhodamine-labeled goat anti-rabbit IgG (red).

Transfected HEK-293 cells were subjected to SDS PAGE followed by western blot with Catalog No:111226(GTDC1 Antibody) at dilution of 1:500

