

# GRO alpha antibody



Catalog Number: 111217

## Product name

GRO alpha antibody

## Specificity

Human, Mouse; other species not tested.

## Antibody description

GRO alpha Rabbit Polyclonal antibody. Positive WB detected in COLO 320 cells, mouse small intestine tissue. Positive IHC detected in human ovary tumor tissue. Observed molecular weight by Western-blot: 8 kDa

## Preparation

This antibody was obtained by immunization of GRO alpha recombinant protein (Accession Number: NM\_001511). Purification method: Antigen affinity purified.

## Formulation

PBS with 0.1% sodium azide and 50% glycerol pH 7.3.

## Storage

Store at -20°C. DO NOT ALIQUOT

## Clonality

Polyclonal

## Ig Type

Rabbit IgG

## Applications

ELISA, WB, IHC

## Dilutions

Recommended Dilution:

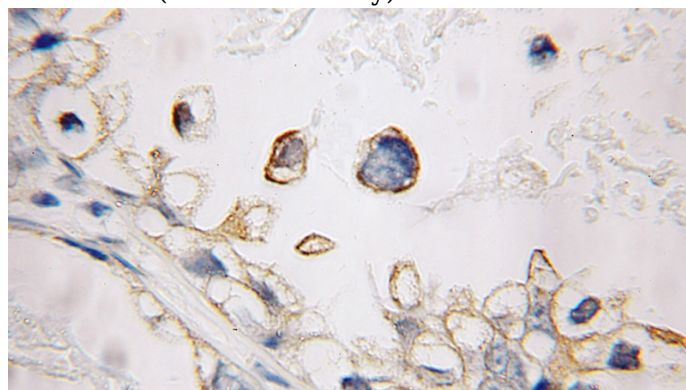
WB: 1:500-1:5000

IHC: 1:20-1:200

## Validations



COLO 320 cells were subjected to SDS PAGE followed by western blot with Catalog No:111217(CXCL1 antibody) at dilution of 1:300



Immunohistochemical of paraffin-embedded human ovary tumor using Catalog No:111217(CXCL1 antibody) at dilution of 1:100 (under 10x lens)