

# GRK6 antibody

Catalog Number: 111215

## Product name

GRK6 antibody

## Specificity

Human, Mouse, Rat; other species not tested.

## Antibody description

GRK6 Rabbit Polyclonal antibody. Positive IP detected in HEK-293 cells. Positive WB detected in HEK-293 cells, human kidney tissue. Positive IHC detected in human renal cell carcinoma tissue. Observed molecular weight by Western-blot: 66 kDa

## Preparation

This antibody was obtained by immunization of GRK6 recombinant protein (Accession Number: NM\_002082). Purification method: Antigen affinity purified.

## Formulation

PBS with 0.1% sodium azide and 50% glycerol pH 7.3.

## Storage

Store at -20°C. DO NOT ALIQUOT

## Clonality

Polyclonal

## Ig Type

Rabbit IgG

## Applications

ELISA, WB, IP, IHC

## Dilutions

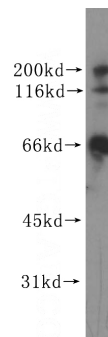
Recommended Dilution:

WB: 1:500-1:5000

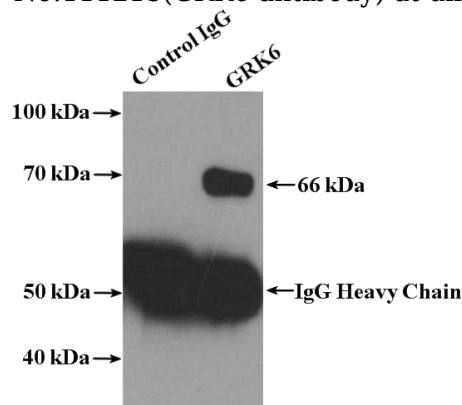
IP: 1:200-1:2000

IHC: 1:50-1:500

## Validations



HEK-293 cells were subjected to SDS PAGE followed by western blot with Catalog No:111215 (GRK6 antibody) at dilution of 1:500



IP Result of anti-GRK6 (IP: Catalog No: 111215, 4ug; Detection: Catalog No: 111215 1:500) with HEK-293 cells lysate 1120ug.