

# GSPT1 antibody

Catalog Number: 111175

## Product name

GSPT1 antibody

## Specificity

Human, Mouse, Rat; other species not tested.

## Antibody description

GSPT1 Rabbit Polyclonal antibody. Positive IHC detected in human breast cancer tissue. Positive WB detected in SGC-7901 cells, HeLa cells. Observed molecular weight by Western-blot: 80 kDa; 84 kDa

## Preparation

This antibody was obtained by immunization of GSPT1 recombinant protein (Accession Number: NM\_001130006). Purification method: Antigen affinity purified.

## Formulation

PBS with 0.1% sodium azide and 50% glycerol pH 7.3.

## Storage

Store at -20°C. DO NOT ALIQUOT

## Clonality

Polyclonal

## Ig Type

Rabbit IgG

## Applications

ELISA, WB, IHC

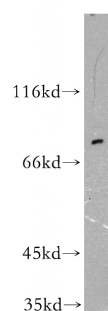
## Dilutions

Recommended Dilution:

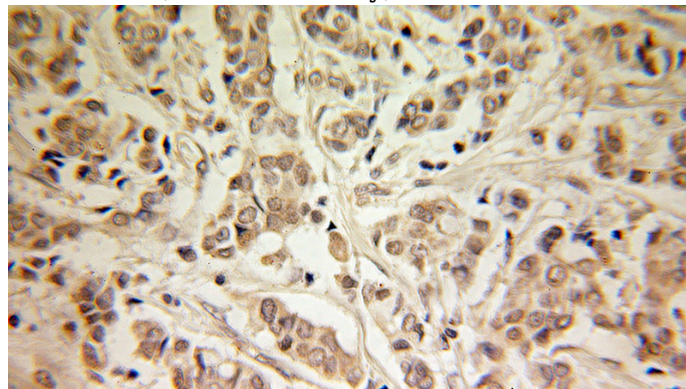
WB: 1:200-1:1000

IHC: 1:20-1:200

## Validations



SGC-7901 cells were subjected to SDS PAGE followed by western blot with Catalog No:111175(GSPT1 antibody) at dilution of 1:100



Immunohistochemical of paraffin-embedded human breast cancer using Catalog No:111175(GSPT1 antibody) at dilution of 1:100 (under 10x lens)