

# GSK3B antibody

Catalog Number: 111171

## Product name

GSK3B antibody

IP: 1:200-1:2000

IHC: 1:20-1:200

## Specificity

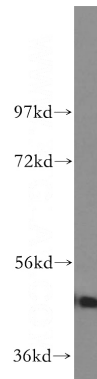
Human, Mouse; other species not tested.

IF: 1:10-1:100

## Validations

### Antibody description

GSK3B Rabbit Polyclonal antibody. Positive IHC detected in human prostate cancer tissue. Positive IF detected in NIH/3T3 cells, HeLa cells. Positive WB detected in HeLa cells, HEK-293 cells. Positive IP detected in HeLa cells. Observed molecular weight by Western-blot: 46-52kd



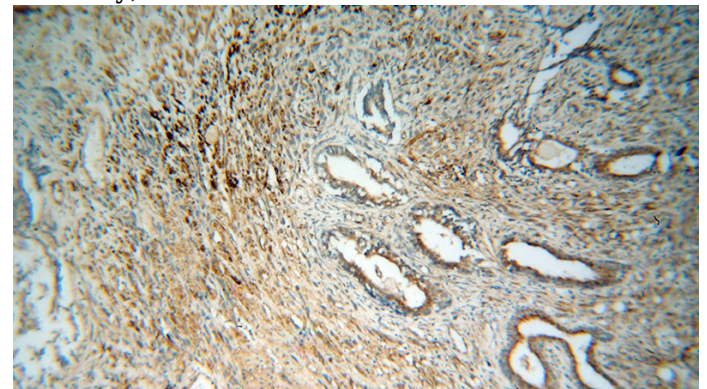
### Preparation

This antibody was obtained by immunization of Peptide (Accession Number: NM\_002093). Purification method: Antigen affinity purified.

HeLa cells were subjected to SDS PAGE followed by western blot with Catalog No:111171(GSK3B antibody) at dilution of 1:1000

### Formulation

PBS with 0.02% sodium azide and 50% glycerol pH 7.3.



### Storage

Store at -20°C. DO NOT ALIQUOT

### Clonality

Polyclonal

### Ig Type

Rabbit IgG

### Applications

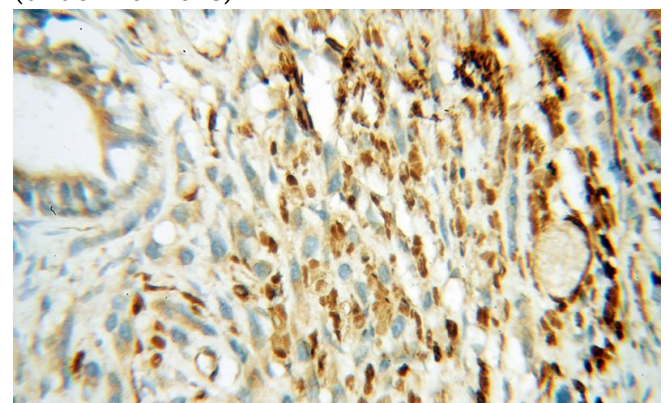
ELISA, WB, IHC, IF, IP

Immunohistochemical of paraffin-embedded human prostate cancer using Catalog No:111171(GSK3B antibody) at dilution of 1:100 (under 10x lens)

### Dilutions

Recommended Dilution:

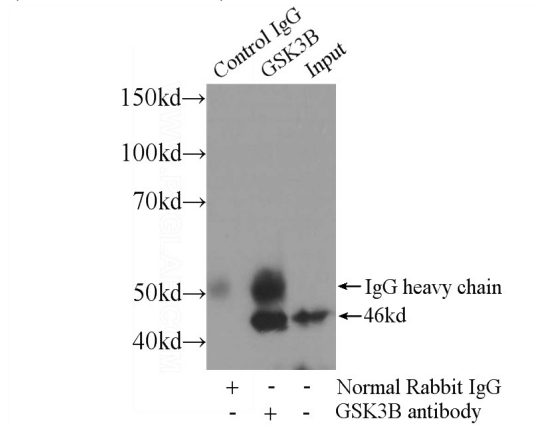
WB: 1:500-1:5000



# GSK3B antibody

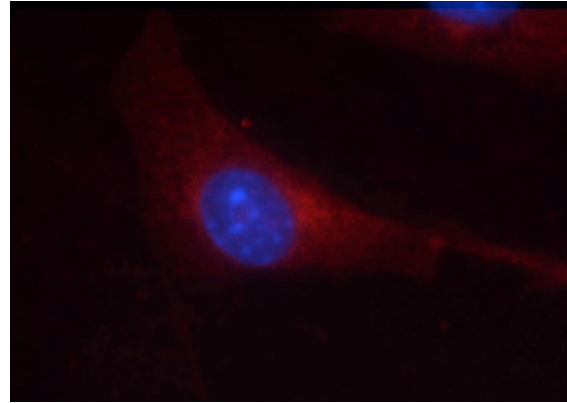
Catalog Number: 111171

Immunohistochemical of paraffin-embedded human prostate cancer using Catalog No:111171(GSK3B antibody) at dilution of 1:100 (under 40x lens)



IP Result of anti-GSK3B (IP:Catalog No:111171,

3ug; Detection:Catalog No:111171 1:500) with HeLa cells lysate 920ug.



Immunofluorescent analysis of NIH/3T3 cells using Catalog No:111171(GSK3B Antibody) at dilution of 1:25 and Rhodamine-Goat anti-Rabbit IgG